

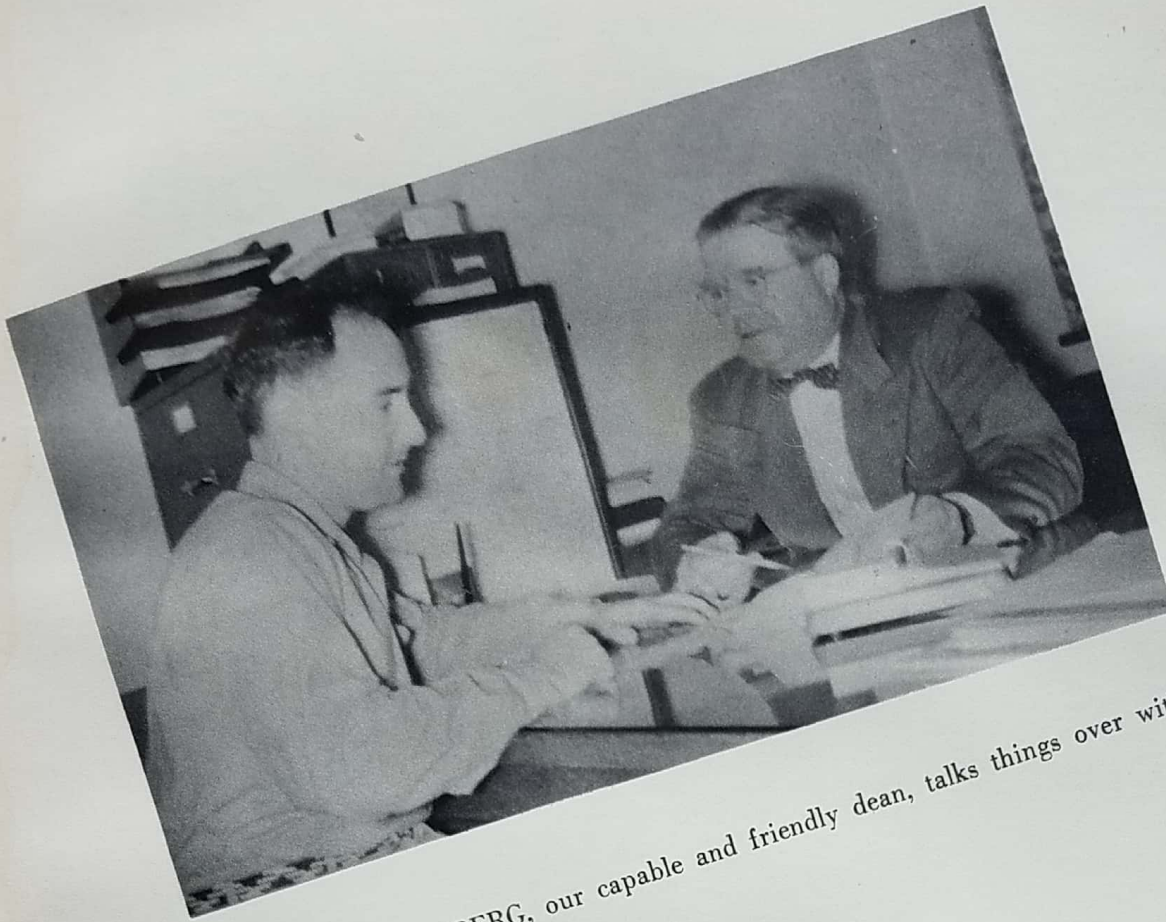


SAGA 1955

Saga 9, 1955



*Brainerd Junior College
Brainerd, Minnesota*



MR. JOHN E. CHALBERG, our capable and friendly dean, talks things over with
PAUL BUDLONG.



Superintendent of Schools, H. C. NORD-
GAARD.



RUSSELL GRISWOLD, M.
M. — Music.



NILES JEFFERSON, M. A.
— Zoology, Botany, Anatomy,
Public Health.



LEONARD I. KULSETH,
M. A. — English, Speech,
Little Theater.



MARY JANE JOHNSON,
Secretary to the Dean.



CLARENCE LAUGESON,
M. A. — Economics, Social
Science.



WILLIAM MAGAJNA, M.
A. — Terminal Economics,
Accounting, Saga, Collegian.



HARRY MARTIN, M. A. —
Communications, English.



WALTER MELLEM, M. E.
Engineering Drawing,
Physics.



ESTHER NELLER, M. A.
— Mathematics.



REBECCA SANDVEN, B. A.
— Commercial; Girls' Club.



Dean of Women, MISS MARY TORNSTROM,
M. A., and MR. NEAL VIVIAN, M. A., in
charge of merchandising, offer help to stu-
dents in their choice of occupation.



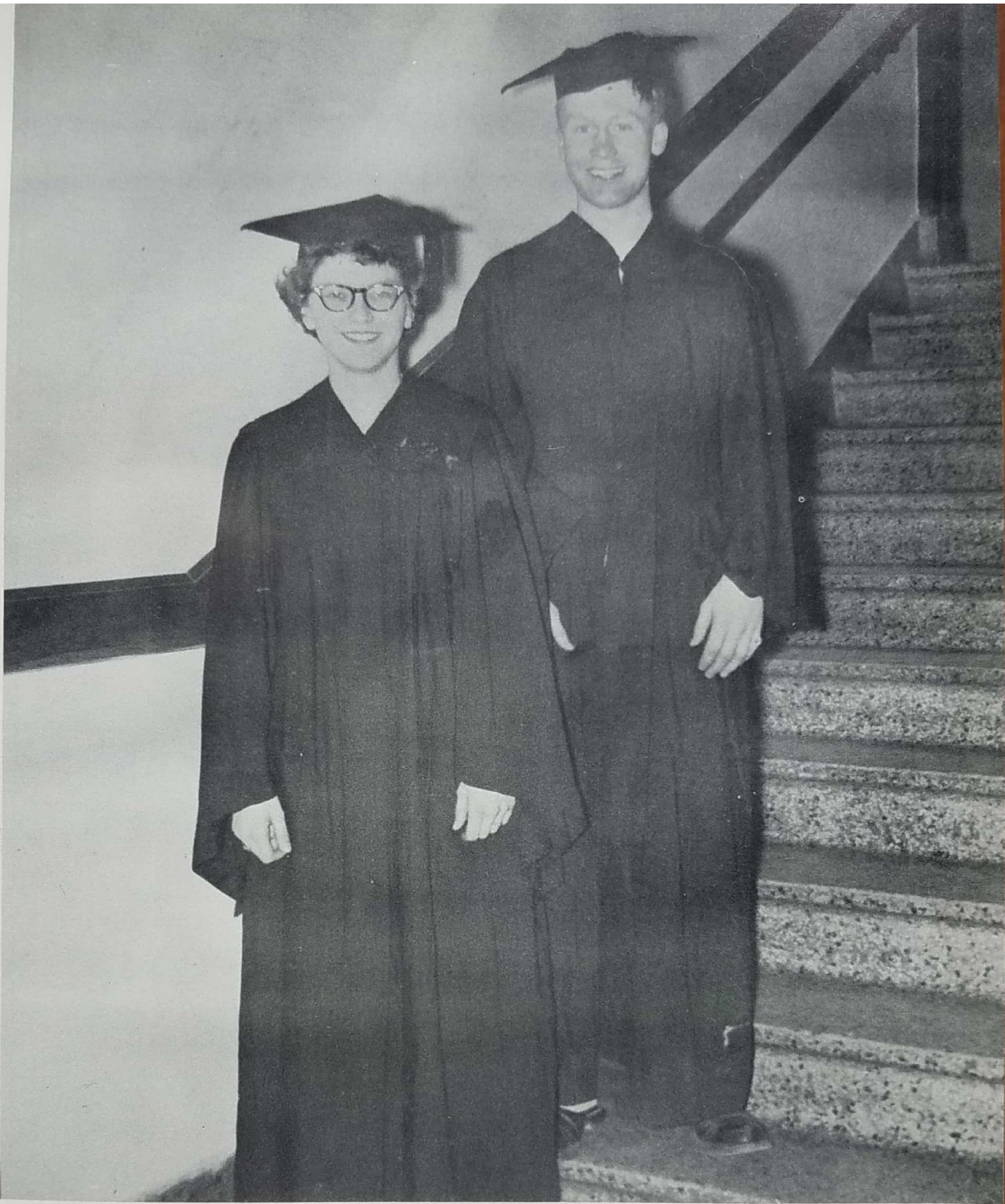
ESTHER SCHOEDER, M. A.
— Librarian, History, F.T.A.



A. LESLIE SMITH, M. A. —
Chemistry, Football Coach.



EDWARD TONISH, M. A.
— Sociology, Psychology.



Classes



BARBARA MARIE ANDERSON

Barby

Brainerd—Pre-Education; Kappa Delta
Sigma 2; Feature Editor, Collegian 1;
Cheerleading 1-2; FTA 2.



HOMER LEE ANDERSON

Swede

Brainerd — Business Administration.



RONALD ROY BAAKKONEN

Ron

Brainerd — Business Administration;
Little Theater 1-2; Stage Crew 1-2.

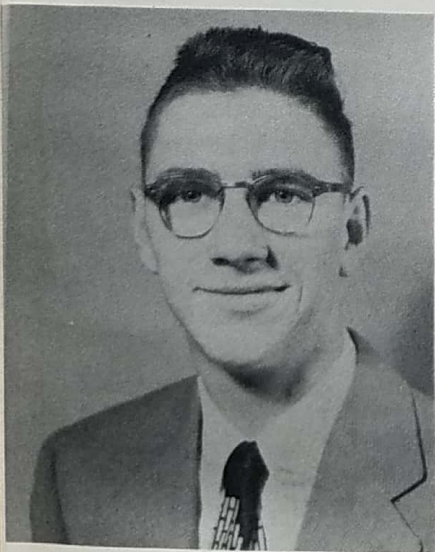


Leading the Sophomore Class this year are DENNIS GORDON,
President; NANCY WATSON, Vice-president; and RON NEL-
SON, Secretary-Treasurer.



SAMUEL D. BARTO

Brainerd — Pre-Engineering.



GERALD ANTHONY BENSON

Jerry

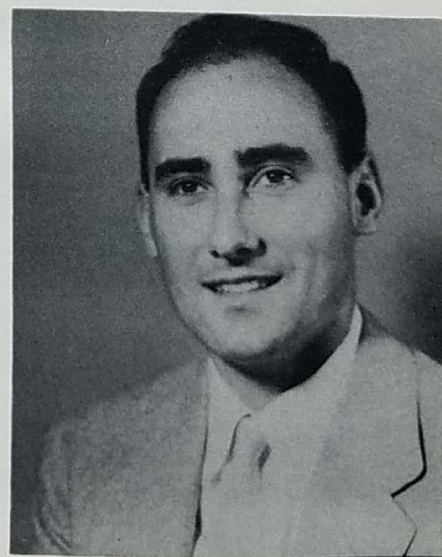
Brainerd — Business Administration.



ROENA MAE BETTS

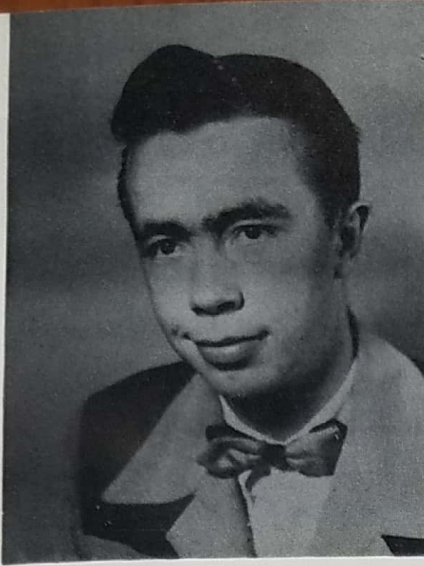
Mo

Brainerd — S.L.A.; Collegian 1.



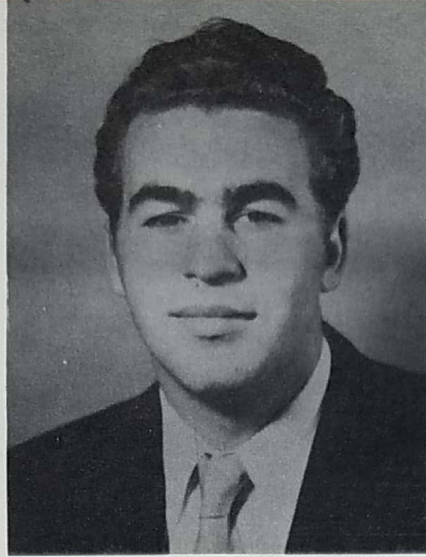
PAUL BUDLONG

Brainerd — Pre-Engineering.



DON L. BYE

Pequot Lakes — Pre-Law; Lettermen's Club 1-2; Collegian 2; Sports Editor, Saga 2; Basketball 1-2; W. C. Cobb Rotary Scholarship.



GERALD ALLAN CAHOON

Jerry
Crosby — S.L.A.



DONALD JOHN CALLISTO

Du-Du
Crosby — Physical Education; Vice-president, Lettermen's Club 2; Co-Captain, Football 2; Basketball 2.



LOWELL FRANCIS CHASE

Crosby — Physics.



JAMES RILEY COLE

Brainerd — Pre-Law; Lettermen's Club 2; Little Theater 1-2; Football 2.



GORDON N. CRONENBERGER

Gordy

Crosby — Business Administration; Student Council 2; Collegian 1-2; Little Theater 2.



JOAN EVELYN ECKERLY

Jo

Brainerd — Business; Girls Glee Club 2; President, Kappa Delta Sigma 2; Vice-president, Student Council 2; Collegian 1; Editor, Saga 2; Women's Club Scholarship 1.



JOHN HENRY FLETCHER

Fletch

Brainerd — Business; Collegian 1; Saga 1; Pep Band 2.



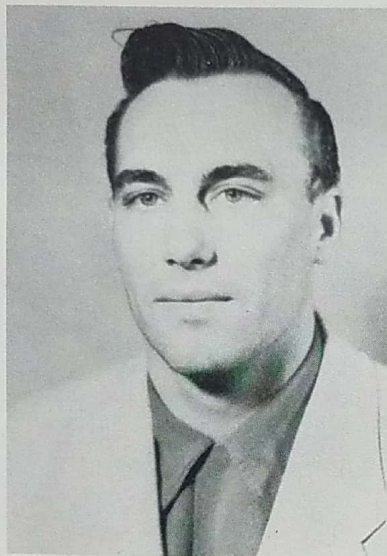
DENNIS GATES GORDON
 Brainerd — S.L.A.; Student Council 2;
 President, Sophomore Class.



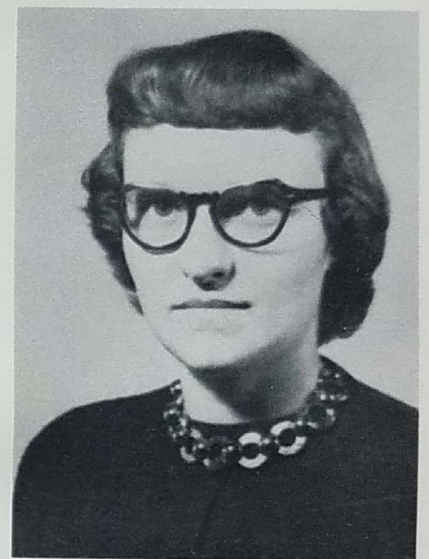
ALLEN K. GRANT
Al
 Merrifield — Pre-Engineering; Assistant
 Editor, Collegian 2; Vice-president,
 Freshman Class 1.



F. SHELDON HEGLUND
 Crosby — Pre-Engineering; Lion's Club
 Scholarship.



TOM R. HEGSTAD
 Brainerd — Pre-Engineering; Letter-
 men's Club 2; Football 2.



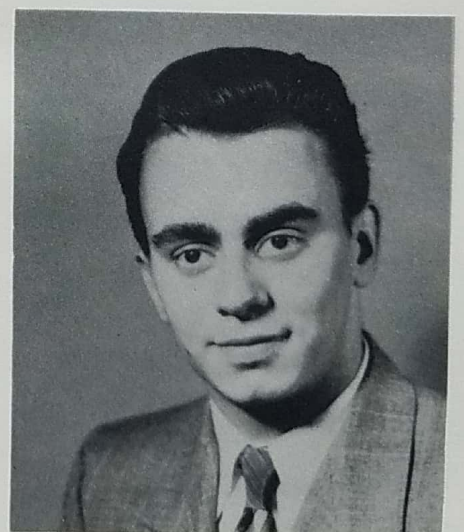
JOYCE PHYLISS HILL
Jo
 Brainerd — Pre-Teaching; Girls Glee
 Club 2; Assistant Editor, Saga 1; Pep
 Band 1; Little Theater 1-2.



DONALD GEORGE JENSEN
 Brainerd — Business; Lettermen's Club
 2; Basketball 2.



MARVIN JOHN JENSEN
Marv
 Merrifield — Accounting; Lettermen's
 Club 2; Collegian 2; Saga 2; Football
 2.



JAMES A. JOHNSON
Jim
 Crosby — S.L.A.; Lettermen's Club 2;
 Football 2.



LARRY KARNOWSKI
Brainerd — Pre-Engineering; Lettermen's Club 2; Little Theater 2; Football 2.



JAMES L. LIND
Jim
Brainerd — Pre-Engineering.



PAUL DAVID MacPHERSON
Brainerd — Pre-Teaching; Lettermen's Club 1-2; President 2, Student Council 1-2; Basketball 1-2; Co-Captain 2.



MARIEL MAE MAGNAN
Meg
Brainerd — S.L.A.; Girls Glee Club 2; Collegian 2.



ANNA KAY NELSON
Merrifield — Physical Therapy; News Editor 1, Society Editor 2, Collegian 1-2; Little Theater 1-2.



RONALD GOODMAN NELSON
Brainerd — Pre-Engineering; Student Council 2; Circulation Manager 1; Editor 2, Collegian 1-2; Secretary-Treasurer 2, Sophomore Class.



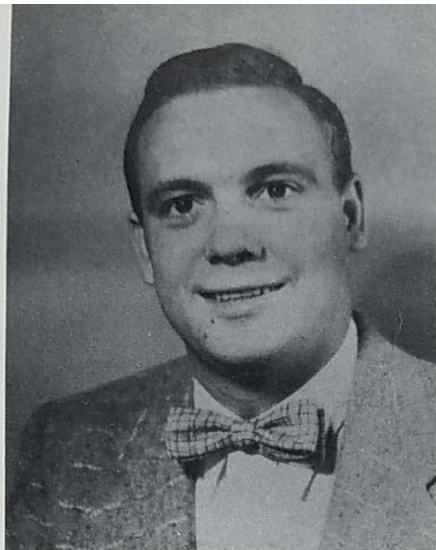
DORIS CHRISTINE NORQUIST
Brainerd — Pre-Home Economics.



EARLE DWAYNE PETERSEN
Squeaky
Brainerd — Religious Youth Work; Circulation Manager 2, Collegian 1-2.



JOHN M. PETERSON
Brainerd — Pre-Agricultural.



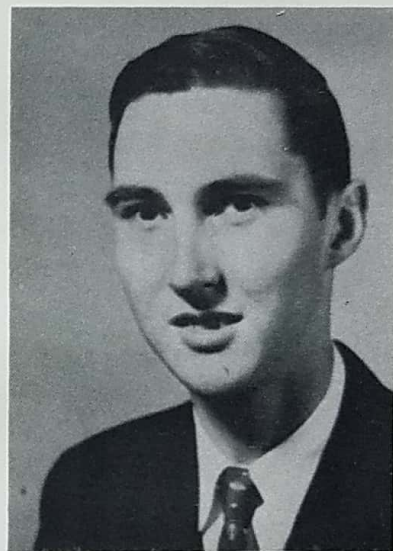
THEODORE SCHULTZ
Ted
Brainerd — S.L.A.; Lettermen's Club
2; Little Theater 2; Football 2.



JOAN MARY SCULL
Joanie
Brainerd — Business; Girls Glee Club
2; Collegian 2.



MARILYN EDITH TWEED
Pequot Lakes — Pre-Teaching; Girls
Glee Club 2; Secretary, Kappa Delta
Sigma 2; Saga 2; Cheerleading 1-2.



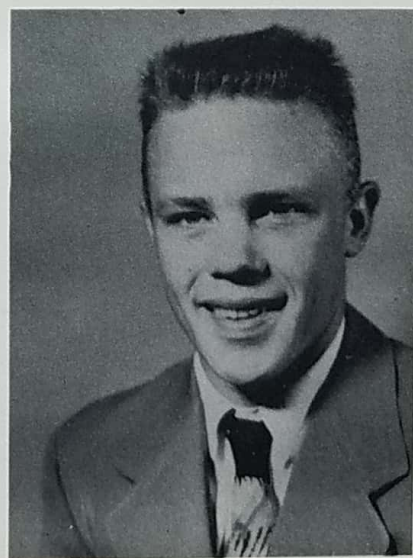
**GILBERT DEAN
WASSERZIEHER**
Bav Lake — S.L.A.



NANCY JANE WATSON
Crosby — Psychology; Student Council
1; Collegian 1-2; Editor, Saga 1; Vice-
president, Sophomore Class; Homecom-
ing Attendant 1; Lion's Club Scholar-
ship.



REVA M. WILSON
Brainerd — Pre-Teaching; Kappa Delta
Sigma; Vice-President, FTA 2.



CLARENCE LE ROY WOLD
Clancy
Brainerd — Pre-Teaching; Business
Manager 2, Collegian 1-2; Business
Manager 2, Saga 1-2; Little Theater 2.



JOANNE MARIE
AMUNDSON

Jo

Pequot Lakes — Treasurer,
Kappa Delta Sigma; FTA.



BARBARA JEANNE
AYLER

Barb

Brainerd — Girls Glee
Club; Kappa Delta Sigma;
Little Theater; Homecom-
ing Attendant.



BARBARA MAE BISTED

Barb

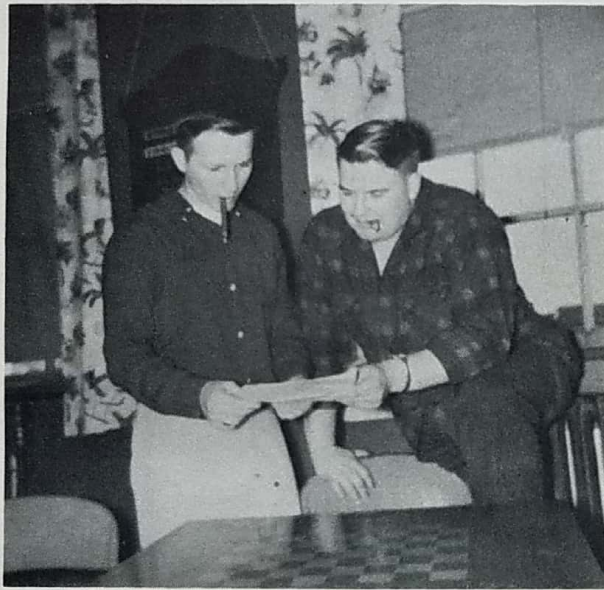
Brainerd — Kappa Delta
Sigma; Collegian; Saga;
FTA.



HOWARD HARVEY
BLANCK

Jiggs

Brainerd — Lettermen's
Club; Basketball.



Freshmen Class officers JERRY ISLE and
MATT HILL relax in the Lounge over a Coke.



WARREN RAYMOND
BLOOMQUIST

Brainerd — Pep Band.



EDWARD BROCKMAN

Ed

Brainerd — Lettermen's
Club.



VIRGINIA R. CAUGHEY

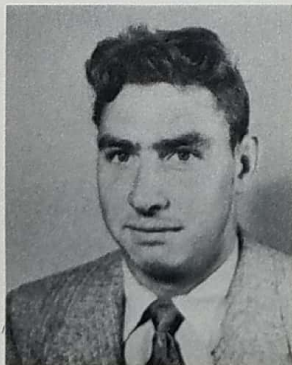
Ginnie
Brainerd.



MARJORY GLADYS
CHRISTIANSON

Marj

Brainerd — Kappa Delta
Sigma; Student-Faculty
Editor, Saga; Pep Band;
FTA; Women's Club
Scholarship.



JAMES CONWAY

Brainerd — Lettermen's
Club; Football.



CAROL YVONNE
CROMETT

Pine River — Girls Glee
Club; Kappa Delta Sigma;
Secretary, FTA.



RICHARD EUGENE
DEAN

Dick
Brainerd.



JACK BENNETT
DE MARCO

Crosby.



JEAN RUTH ECKERLY
Jase
Brainerd — Vice-President,
Kappa Delta Sigma; Student
Council; News Editor,
Collegian; Activities Editor,
Saga.



CARL E. EDEBURN
Tiny
Pillager — Lettermen's
Club; Football.



ROGER LE ROY
ELMORE
Rog
Brainerd.



KENT MARLIN
FELDSIEN
Beetle
Brainerd — Lettermen's
Club; Football.



LEE RICHARD FOSSEN
Wadena.



LESLIE PAUL
GENDRON
Bugs
Brainerd.



GILBERT NELS
GESSNER
Gil
Brainerd — Lettermen's
Club; Collegian; Football.



RODNEY BYRON
GORDON
Brainerd.



ARNOLD GRAVLEY
Brainerd.



CAROL ANN
GRONQUIST
Brainerd — Homecoming
Attendant.



JERROLD WALDO
GUIN
Brainerd.



DUANE THEODORE
HANSON
Doc
Brainerd — Lettermen's
Club; Saga; Football; Assistant,
Chemistry Lab.



DAVID HEATH
Dave



MARY SUZANNE
HEDLUND
Pine River — Kappa Delta
Sigma.



EDWARD KEITH
HEIKKENEN
Hike
Brainerd — Lettermen's
Club; Football.



MATHEW A. HILL
Matt
Brainerd — Lettermen's
Club; Student Council;
Football; FTA; Secretary-
Treasurer, Freshman Class.



DONALD HOLMES
Brainerd.



MICHAEL FREDRICK
IMGRUND
Mike
Brainerd.



THEODORE FRANK
IMGRUND
Ted
Brainerd — Lettermen's
Club; Student Manager,
Football.



GERALD CLYDE ISLE
Jerry
Brainerd — Lettermen's
Club; Student Council;
Little Theater; Football;
FTA; President, Freshman
Class.



FLORIAN CLARENCE
JABAS
Buss
Brainerd.



ANITA CONSTANCE
JACOBS
Jake
Brainerd — Kappa Delta
Sigma; Homecoming
Queen.



CHESTER F. JOHNSON
Chet
Brainerd.



JIM L. JOHNSON
Brainerd — Lettermen's
Club; Treasurer, Student
Council; Little Theater;
Basketball.



JANET KARNOWSKI
Pogo
Brainerd — Girls Glee
Club; Kappa Delta Sigma;
Little Theater.



JACK DALE LARSON
Brainerd — Lettermen's
Club; Football; Basket-
ball.



JERRY TITUS LEESE
Louse
Brainerd — Lettermen's
Club; Collegian; S a g a;
Football.



ALLAN GEORGE
MAGNAN
Fort Ripley.



DEAN CHALBERG congratulates MARJORIE CHRIS-
TIANSON upon receiving the Women's Club Scholarship, which is awarded annually to an outstanding
Freshman girl for scholarship, leadership, character,
and service.



JAMES CHRISTIAN
MELBY
Jim
Brainerd — Lettermen's
Club; Basketball, Co-Cap-
tain; FTA, Treasurer.



PATRICIA JOAN
MICKLEY
Pat
Aitkin — Kappa Delta
Sigma; President, FTA;
Homecoming Attendant.



JOHN RICHARD MILLER
Jack
Brainerd.



RICHARD JOSEPH MILLER
Dick
Brainerd.



WILLIAM O. MILLER
Bing
Crookston — Lettermen's Club; Collegian; Saga; Co-Captain, All-Conference, Football; Basketball.



WAYNE KENNETH NEUBERGER
Hambone
Pillager — Lettermen's Club; Football.



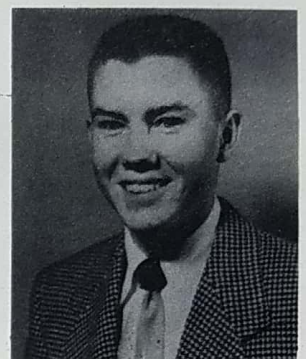
JAY NORWOOD
Brainerd.



ELAINE MARIE NYBORG
Brainerd.



KEITH DEVERE OLSON
Ole
Lake Hubert.



RICHARD CHARLES PEABODY
Dick
Brainerd — Basketball.



JOHN PHILLIPS
Brainerd.



DICK RAYMOND
Pops
Pequot Lakes — Student Council; Feature Editor, Collegian; Saga; Football.



RUTH AMANDA SATTER
Brainerd — Kappa Delta Sigma; Collegian; FTA.



BERNARD F. SCHULTES
Benny
Brainerd — Lettermen's Club; Football.



JOHN O. SCOTT
Trotter
Brainerd — Sports Editor, Collegian; Saga.



DUANE LEONARD SEA
Red
Brainerd — Saga.



LOUIS SMILICH, JR.
Lou
Crosby.



DONALD DUANE SMITH
Don
Brainerd — Homecoming M. C.



PATRICIA ANNE SMITH
Pat

Brainerd — Kappa Delta Sigma; Collegian; Saga; Pep Band; FTA.



PAUL SUNDE
Crosby-Ironton — Lettermen's Club; Basketball.



VICTOR RAY SWENSON
Vic
Pequot Lakes — FTA.



JAMES FREDERICK TELL
Jim
Brainerd.



ROBERTA JEANNE THERIAULT
Bert

Brainerd — Girls Glee Club; Kappa Delta Sigma; Secretary, Student Council; Little Theater; Homecoming Attendant.



JERRY THOMPSON
Brainerd.



STEPHEN WESLY VOELS
Brainerd.



MICHAEL JOSEPH WALDMANN
Mike

Brainerd — Lettermen's Club; Collegian; Little Theater; Football; Stage Crew.



GEORGE THOMAS WAREING
Brainerd.



FRANCES JANE WITALA
Fran

Minneapolis — Girls Glee Club; Kappa Delta Sigma; Little Theater; FTA.



YVONNE FAY WOLF
Brainerd — Girls Glee Club; Kappa Delta Sigma; Little Theater; FTA.



PART-TIME STUDENTS

IDA ANDERSON
Brainerd.

SALLY BOLSTER
Brainerd.

LOIS JEANETTE JOHNSON
Brainerd — Secretarial.

Kappa Delta Sigma

Spring Formal

Student Council

Saga

Future Teachers of America

Lettermen's Club

Collegian

Pep Band

Initiation



Activities

Saga



This is the staff responsible for this issue of THE SAGA. Left to right, front row: MARJORIE CHRISTIANSON, CLARENCE WOLD, JOAN ECKERLY, JOHN SCOTT, BARBARA BISTED, MR. MAGAJNA. Second row: RICHARD RAYMOND, JEAN ECKERLY, MARVIN JENSEN, DONALD BYE, DUANE HANSON, MARILYN TWEED.

SAGA STAFF

JOAN ECKERLY	Editor
MARJORIE CHRISTIANSON	Editor, Student-
BARBARA BISTED	Faculty Section
JEAN ECKERLY	Editor, Activities Section
RICHARD RAYMOND	
DON BYE	Editor, Sports Section
DUANE HANSON	
JOHN SCOTT	
PATRICIA SMITH	Advertising
RUTH SATTER	
MARILYN TWEED	
BARBARA BISTED	
MARVIN JENSEN	
CLARENCE WOLD	Business Manager
WILLIAM MAGAJNA	Advisor



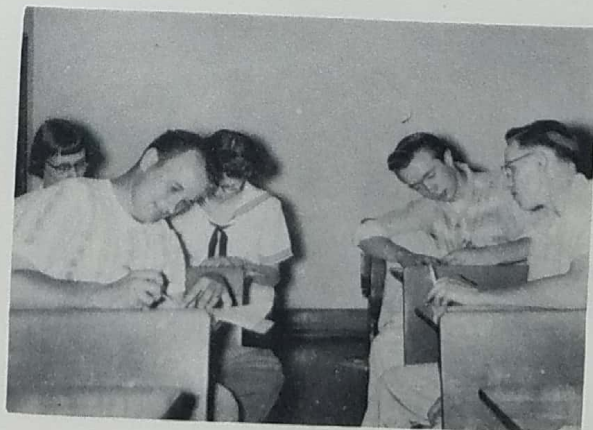
Collegian



The Collegian, with its monthly publications, serves the college with news and a bit of humor. The members of the hard-working staff are, front row, from left to right: CLARENCE WOLD, DONALD BYE, RICHARD RAYMOND, ALLEN GRANT, RONALD NELSON, JOHN SCOTT, JEAN ECKERLY. Second row: GILBERT GESSNER, MR. MAGAJNA, JOAN SCULL, NANCY WATSON, ANNA KAY NELSON, MARIEL MAGNAN, RUTH SATTER, BARBARA BISTED, MARVIN JENSEN.

COLLEGIAN STAFF

RONALD NELSON	Editor
JEAN ECKERLY	News Editor
GILBERT GESSNER	
RICHARD RAYMOND	Feature Editor
DONALD BYE	
JOHN SCOTT	Sports Editor
MIKE WALDMANN	
ANNA KAY NELSON	Society Editor
NANCY WATSON	
RUTH SATTER	Circulation Manager
CLARENCE WOLD	Business Manager
PATRICIA SMITH	Advertising
MARVIN JENSEN	
BARBARA BISTED	
PATRICIA SMITH, MARIEL MAGNAN, JOAN SCULL,	
NANCY WATSON	Typists
WILLIAM MAGAJNA	Advisor



Student Council



The Student Council represents the entire student body of the college and has brought about many needed alterations as well as new ideas. It is responsible for many of the convocations and activities held throughout the year. The members are, from left to right, front row: GERALD ISLE, Freshmen Class President; ROBERTA THERIAULT, Secretary; JOAN ECKERLY, Vice-president; JEAN ECKERLY, Delegate-at-large; RICHARD RAYMOND, Delegate-at-large; MR. J. E. CHALBERG, Dean and Advisor. Second row: JAMES L. JOHNSON, Treasurer; DENNIS GORDON, Sophomore Class President; PAUL MacPHERSON, President; GORDON CRONENBERGER, Delegate-at-large; RONALD NELSON, Sophomore Class Treasurer; MATTHEW HILL, Freshmen Class Secretary-treasurer.

Future Teachers of America



The Tornstrom-Chalberg Chapter of the F.T.A. was officially organized on March 7, 1955. PATRICIA MICKLEY was elected President; REVA WILSON, Vice-president; CAROL CROMETT, Secretary; and JAMES MEJBY, Treasurer. The members are, from left to right, front row: DWAYNE PETERSON, RUTH SATTER, CAROL CROMETT, BARBARA ANDERSON, MATT HILL. Second row: JOANNE AMUNDSON, MARJORY CHRISTIANSON, FRANCES WIITALA, MISS ESTHER SCHROEDER, Advisor. Top row: PATRICIA MICKLEY, YVONNE WOLF, REVA WILSON, BARBARA BISTED.

Lettermen's Club



The Lettermen's Club is composed of all men who have received a letter in either football or basketball. They are, from left to right, front row: JAMES L. JOHNSON; GERALD ISLE; JACK LARSON; RICHARD RAYMOND; MATTHEW HILL; MR. A. L. SMITH, Advisor. Second row: RICHARD PEABODY; DONALD CALLISTO, Vice-president; KENT FELDSIEN; DUANE HANSON; LARRY KARNOWSKI; GILBERT GESSNER; MICHAEL WALDMANN. Back row: DONALD BYE; PAUL MacPHERSON, President; EDWARD HEIKKENEN; MARVIN JENSEN; JAMES A. JOHNSON; BERNARD SCHULTES; DONALD JENSEN.

Pep Band



To add a little zip to the Raiders' basketball games, PATTI SMITH organized the Pep Band. Many high school students cooperated to make the band a success, which indeed it was. The members are, from left to right, front row: TYRONE ERICKSON, WARREN BLOOMQUIST, PAT SMITH, ALICE ANDERSON, LYLE STEFFENSON, RONALD STORSTAD, JOHN ERICKSON. Second row: MARJORY CHRISTIANSON, DONNA SONNEMAN, CAROL FOSSUM, WARREN TELL, JIM WEISKE.

Kappa Delta Sigma



The Kappa Delta Sigma Sorority was formed in October, 1954, for the sole purpose of being a girls' social organization within the college. Among its many activities, it has sponsored the coffee hours for both college students and night school students during the course of the year. The members are, from left to right, front row: CAROL CROMETT, ROBERTA THERIAULT, MARY HEDIN, JEAN ECKERLY, Vice-president: FRANCES WIITALA, MISS REBECCA SANDVEN, Advisor. Second row: MARILYN TWEED, Secretary; YVONNE WOLF, RUTH SATTER, JOANNE AMUNDSON, Treasurer; JOAN ECKERLY, President. Third row: BARBARA AYLER, REVA WILSON, MARJORY CHRISTIANSON, BARBARA ANDERSON. Top row: PATRICIA MICKLEY, ANITA JACOBS, BARBARA BISTED.

Little Theater



The Little Theater Group is one of the older organizations at B.J.C. It's members give several performances throughout the year. This year, they busied themselves by presenting four plays and forming a new chapter of the national dramatic fraternity, Delta Psi Omega. The members are, from left to right, front row: JAMES L. JOHNSON; GERALD ISLE; LARRY KARNOWSKI; GORDON CRONENBERGER; MR. LEONARD I. KULSETH, Advisor. Second row: NANCY WATSON; ANNA KAY NELSON; FRANCES WIITALA; ROBERTA THERIAULT; BARBARA AYLER, YVONNE WOLF, RONALD BAAKKONEN.

See How They Run



REV. LIONEL and
PENELOPE TOOP.
G. Cronenberger and
R. Theriault



"ONE MOVE AND I'LL SHOOT . . ."
J. Cole, L. Karnowski, T. Schultz, R. Theriault, G. Cron-
enberger, Y. Wolf, J. Johnson, J. Isle.

The Farce of the Worthy Master Pierre Patelin

The Minuet



THE MARCHIONESS
R. Theriault.



"BAAAAAAA" . . .
T. Imgrund.



MASTER PATELIN AND HIS
WIFE. J. Isle and Y. Wolf.

Initiation



GANGWAY—
HERE
WE
COME!



"THE PADDY WAGON"



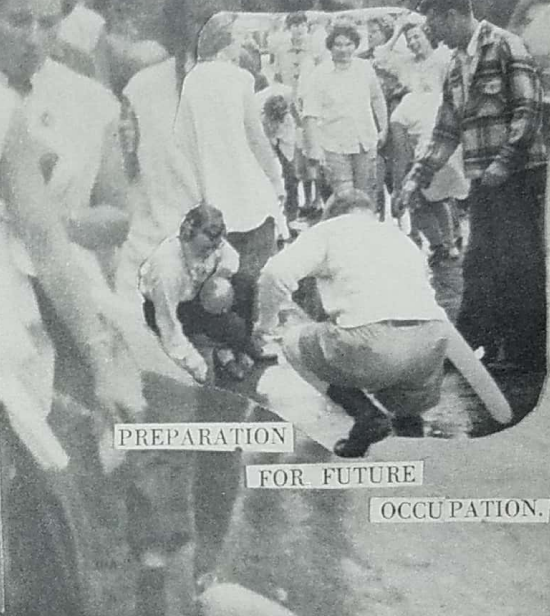
WOW!



EEEEEEEEEEEEK!



IT MUST BE REAL — NO ONE COULD IMAGINE ANYTHING LIKE THAT!



PREPARATION
FOR FUTURE
OCCUPATION.



KANGAROO COURT



THE ISLE . . .

In order to get the Freshmen started on the right foot (well at least on foot anyway), the upper classmen have a week of legalized murder, extortion, slavery, and pure torture. This is Initiation Week. The modest young Freshmen boys were horrified when asked to appear in their "union" suits, especially since only a few of them belonged to the union. The compassionate initiation committee allowed the boys to wear a pair of short pants (on top of their undies), a tie, a bow (in the hair), and a pair of galoshes (no shoes). The more fortunate females were merely required to abstain from make-up and to add two hair ribbons to their tresses each day (one green, one yellow). On the "big" day, they all wore men's shirts (minus the left sleeve) a pair of jeans (minus the right leg, a high heel with an anklet, an oxford with a nylon, and a necklace of bottle caps.

Naturally, at the Initiation Picnic, the Kangaroo Court was held, and although there were no kangaroos present, the Sophomores handed out the justly deserved sentences.

That was Initiation for this year, and, despite the usual comments, it is a very important part of schooling and is looked forward to by the students . . . ask any upper classman.

Homecoming



THE LONG SUSPENSE ENDS — THE QUEEN IS ANNOUNCED!



QUEEN ANITA IS CROWNED



THE QUEEN'S COURT

Christmas Banquet



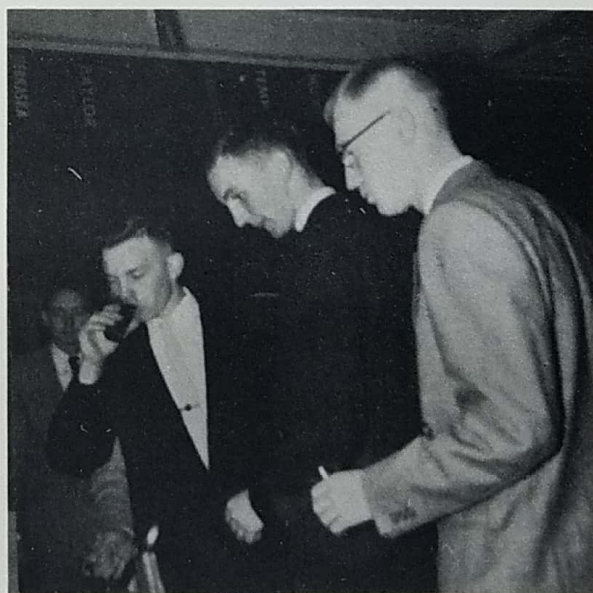
SANTA WAS HERE . . . BOY, WAS HE!



THE MASTER OF CEREMONIES . . .



THAT WAS REALLY A MEAL!



THE COCKTAIL PARTY . . .

EVERYONE GETS IN THE MOOD.

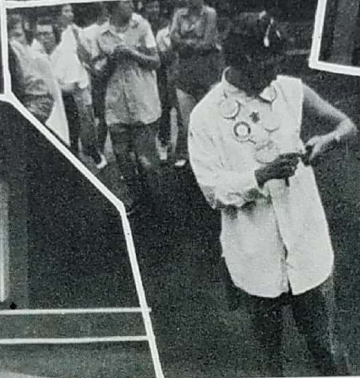
Spring Formal



By far the biggest event of the school year is the Spring Formal. Preparation always begins months in advance but the last-minute rush has never been eliminated. "April Showers" was the theme for our formal this year and the decorations at the Club La Gyal were magnificent. The room was roofed in varying hues of green and a rather fantastic garden of pastel trees occupied a portion of the room. Due to the late date of the formal and the early date of publication, The Saga is only able to show some scenes from the formal. Nevertheless, Saga IX has made history by featuring the formal in its publication.











ATHLETICS



Sitting from left to right: G. GESSNER; D. HANSON; D. HEATH; D. RAYMOND; K. HILL; L. KARNOWSKI, Kneeling: T. SHULTZ; K. FELD-SIEN; G. LEESE; J. ISLE; J. COLE; B. SCHUL- TES; M. JENSEN; and manager, TED IMGRUND.

Standing: Assistant Coach, JOHN WILLIAMS; J. LARSON; M. WALDMANN; E. HEIKKENEN; C. EDEBURN; J. JOHNSON; W. NEUBERGER; J. CONWAY; B. MILLER; Coach, A. LESLIE SMITH.

Although the Raiders' won and lost column is embarrassing, the spirit and attitude of the team was nothing to be ashamed of. Coach A. Leslie Smith and his assistant, John Williams, taught their inexperienced and injury-laden squad the finer points of college football and more important, instilled in them the quality of good sportsmanship. Several players had to quit because of injuries or jobs and so this also complicated the hopes of the team.

The Smith men opened the season against a good Virginia team, which outclassed the Raiders in the first half. The line rallied and the offense began clicking in the last half, but failed to capitalize on several opportunities deep in enemy territory, and so lost 13-0.

Our homecoming game against Eveleth was nearly a repeat performance of the previous week- end. Don Callisto threw a number of good passes which nearly scored, but yet there was a jinx on our crossing the opponent's goal, even though Brainerd had a slight edge in over-all yardage gained. The game ended with a 13 to 0 loss.

October 9th was a sad day for the college grid- sters as the keyed-up Itascans won their homecom- ing with an elusive 32-0 win. The boys from B.J.C. tried valiantly but their passes didn't click and their defensive was literally shattered by the continuous pounding of Itasca's backfield.

The Raiders held the Hibbing Cardinals score- less until late in the last half but then got trampled 38-6. A Brainerd fumble on the 13 yard line started the Hibbing avalanche of touchdowns. Three inter- cepted passes became easy touchdowns for the league leaders and the fourth was scored on a nice run. Ken Hill broke the ice around the Brainerd scoring column and ran 30 yards for a touchdown. The Raiders dropped their final game to Ely by an over-balanced score. The story of this game is best told by the quarter scores: First Quarter—6-0; Sec- ond Quarter—13-6; Third Quarter—13-12; and the game ended 26-12.

Football

	They	We
Virginia	13	0
Eveleth	13	0
Itasca	32	0
Hibbing	38	6
Ely	26	12



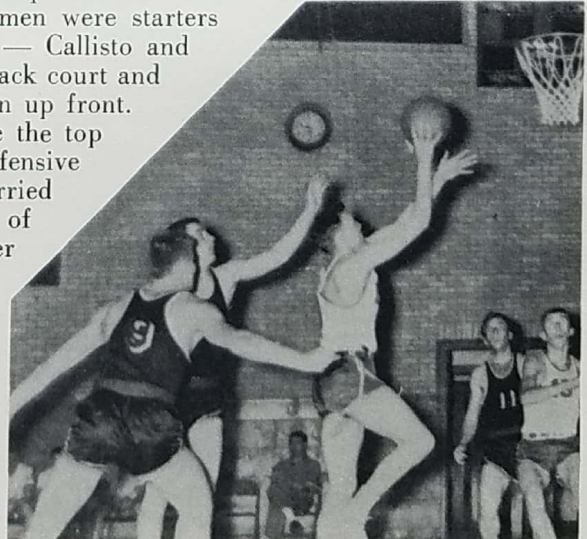
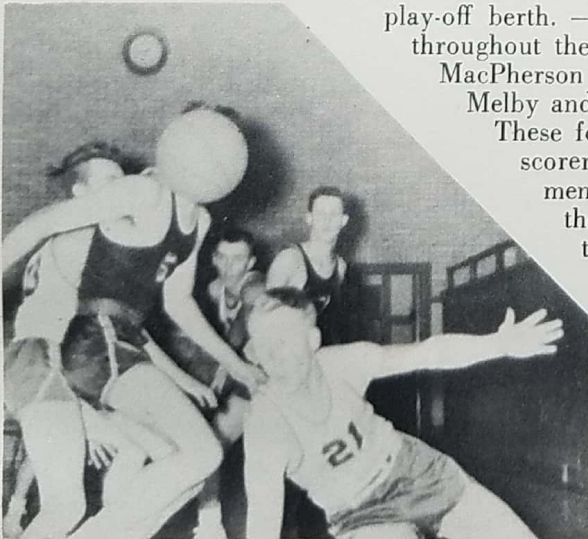
BILL MILLER,
Brainerd's All-Conference End



Coach ADAMSON; KARNOWSKI, BLANCK, SUNDE, LARSON, PEABODY, CAL-
LISTO, MELBY, MacPHERSON, JOHNSON, JENSEN.

Basketball

B. J. C.'s Basketball season of 54-55 could at best be described as average. It contained 8 wins against 10 losses, several of them heartbreakers. A fifth place tie was our lot in the conference race, one step short of a select play-off berth. — Four men were starters throughout the season — Callisto and MacPherson in the back court and Melby and Johnson up front. These four were the top scorers and defensive men who carried the brunt of the Raider attack.





DON CALLISTO, Guard—the mainstay of the outfit — steady, ball-controlling player with a high field goal percentage — top defensive man.



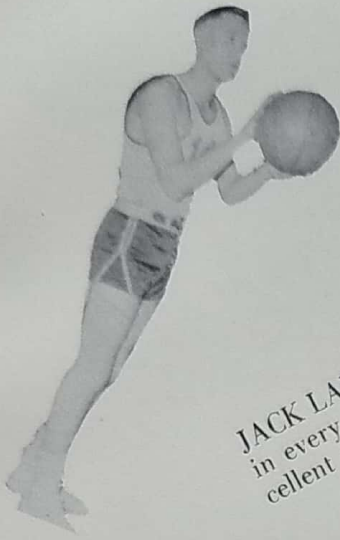
PAUL MacPHERSON, Guard and Co-Captain—All-Conference — good early season scorer — speedy — occasionally came up with sensational defensive plays.



JIM MELBY, Center and Co-Captain — accurate free throws — steady forward — forced into strange position when Miller left for service — slow, deceptive drive-in with uncanny soft touch on backboards.



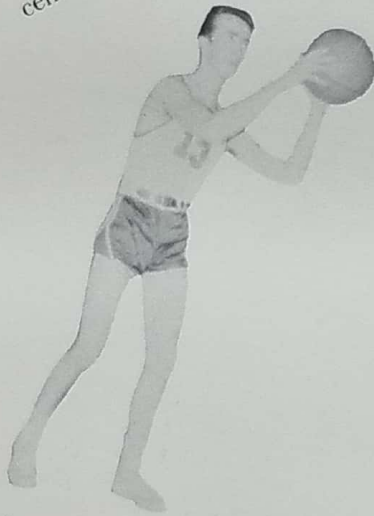
JIM JOHNSON, Forward—high scoring forward — good jump shot — lots of spring and speed for a tall man.



JACK LARSON, Forward—appeared in every game — dead shot with excellent field goal percentage.



DON JENSEN, Forward—started several games — aggressive — accurate jump shot.



DON BYE, Forward—slow — inexperienced — started couple games — team's only southpaw — fair ability to score.



PAUL SUNDE, Forward-Center—strong rebounder — all-around offensive threat — big asset during latter part of season.



DICK PEABODY, Guard—deadly two-hand set shot — clever ball handler — heads-up player considering limited experience.



JIGGS BLANCK, Guard—very fast — aggressive — fair dribbler — could drive in.



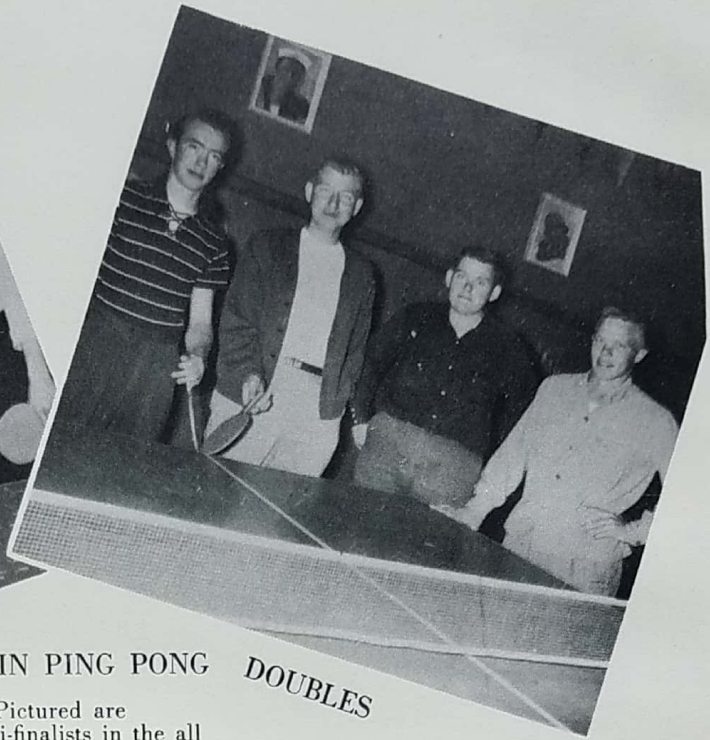
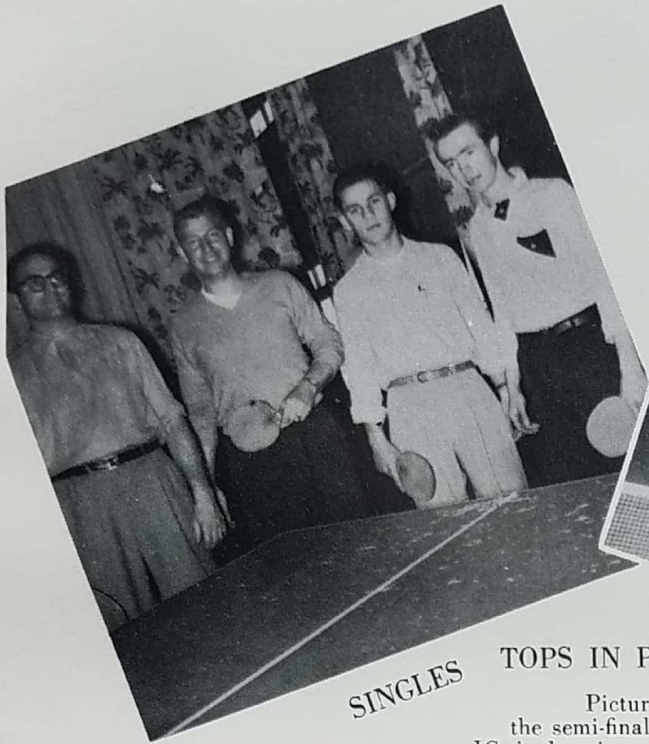
GOLF

Captain Lee Fossen heads the newly organized JC links team. Candidates for the 4 man team which will represent BJC in the Junior College annual tourney at Virginia are: WARREN BLOOMQUIST, LEE FOSSEN, JIM MELBY, DON BYE, RON NELSON, TED SCHULTZ, and not pictured, STEVE VOELS.



TENNIS

Another addition to the JC sports agenda this year is tennis. Organizer and top player is DICK MILLER, a former state tourney entry, who with JERROLD GUIN, DON BYE, and HOMER ANDERSON compose the four man team which will also enter the Junior College Tennis Tourney at Hibbing.



SINGLES TOPS IN PING PONG DOUBLES

Pictured are the semi-finalists in the all JC singles ping pong tourney. Left to right: Niles Jefferson, Homer Anderson, Vic Swenson, and Don Bye. In the best of three semi-final round Anderson defeated Jefferson 2-0 and Swenson won over Bye 2-1. Anderson clipped Swenson in the finals to become undisputed "King of the Paddles". Champions and runners-up in the doubles tourney are:
HOMER ANDERSON—DON BYE, MARV JENSEN—CLANCY WOLD



INTRAMURALS

Back row, left to right: TED SCHULTZ, JIM TELL, TED IMGRUND, BEN SCHULTES, KENT FELDSIEN, FLORIAN IABAS, and RON NELSON. Front row, left to right: JERRY ISLE, GIL GESSNER, MIKE WALDMANN, JOHN MILLER, CLANCY WOLD, ED HEIKKENEN, and LOU SMILICH.



"I'll take this pair," says Ruth. She knows she can always get her choice at PAUL'S SHOE STORE.

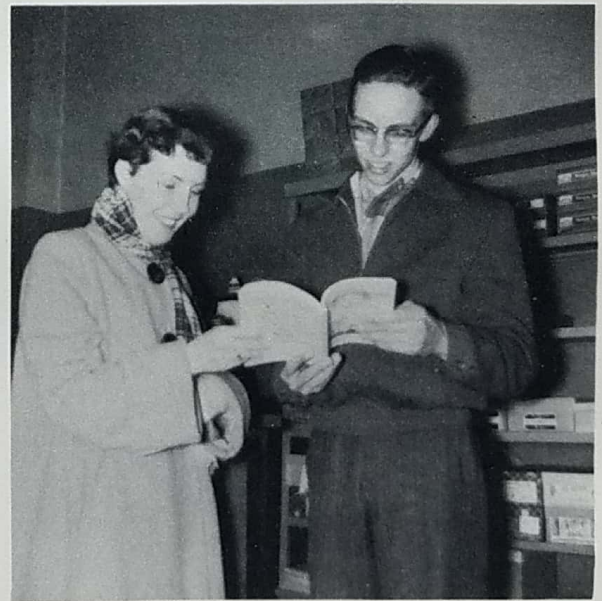


When it comes to decorating, Lois knows she can get everything at COLORCRAFT.

Advertisements



For that glow of health, Reva and Marilyn drink LAUREL DAIRY milk.



Editors Joan and Ron pick the BRAINERD PRESS for the best in printing.



For the best in mens' coats, suits, and accessories, Mike and Clancy know it's BREKKEN'S.



Bill, Benny, and Jerry are enjoying (again) ELVIG'S "real gone" ice cream delights.



For their school supplies, souvenirs, and office equipment, Jo, Marj, and Pat buy them at the BRAINERD OFFICE SUPPLY.



Sam, Chet, Ron, and John enjoy their coffee breaks at BOEDER'S DINER.



Barb and Mike know "you can be sure if it's a Westinghouse" from CHET'S RADIO AND T.V.



Big or small, REICHERT'S buses will take you anywhere, safety and comfortably.



Vic buys all his shirts (pink or otherwise) at O'BRIEN'S, Brainerd's oldest department store.



When these gals are hungry, they stop in at VAN'S CAFE for the best in meals and snacks.



Anita and Barb admire the latest styles in shoes and handbags at SAMPSON'S SHOE STORE.



What do they sell? As George and Gil will tell you, MARSHALL-WELLS HARDWARE sells everything, including toys, paints, and door knobs.

Brainerd Sports Supply J. C. Penny Company

Rosalin Style Shop

Time Jewelry



Miss Sandven, switching from teacher to housewife, knows the value of a Pfaff Sewing Machine, sold only at SKOOG'S.



Jacqueline, Connie, and Joyce (footwear, that is) are among the many brands that Joann can choose from at AKRE'S SHOE DEPARTMENT, located in the O'BRIEN DEPARTMENT STORE.