

# THE CROW WING COUNTY D I G E S T

---

A MAGAZINE PUBLISHED MONTHLY AND ISSUED ON THE TENTH DAY OF EACH MONTH

---

DEVOTED TO THE ADVANCEMENT OF CROW WING COUNTY AND THE DEVELOPMENT OF ITS RESOURCES

---

A. N. JACOBS, Manager.

Main Office at Brainerd, Minn.

Edited By H. D. WILSON

---

Vol. 1

\$1.00 Per Year

No. 1

---

## JULY NUMBER

1914

---

We believe that the farmers of Northern Minnesota have been neglected and through this periodical we will do all we can to bring the citizens of Crow Wing County a realization of the great agricultural possibilities of this section of the state.

We believe that Crow Wing County devotes too much time to the mining industry and too little to farming.

We believe that the farmers in Crow Wing County should be given an opportunity to make good.

We believe in good roads, markets in Crow Wing County and in the development of those rich lands now in the hands of a few speculators.

We believe that the farmers of Crow Wing County should assist us in every way to realize these hopes.

## DEDICATION

This periodical is dedicated to the boosters of Crow Wing county; to those who believe in her prosperity, her progress and her development.

We take this opportunity to thank those citizens of Crow Wing County who so enthusiastically and so willingly gave their mite to make this publication possible. They are the charter members of the Crow Wing County Boosters Club and we will at the proper time prove to them in many ways our appreciation and gratitude. Their interests in this county will be our interests and their hearty cooperation to make this periodical a success is solicited.

Bear in mind that the opinions of the Boosters of our county will sway the policies of this publication and we invite every citizen of Crow Wing County to offer suggestions that may assist us in realizing what we aim to make this publication

The pulse of the better citizens of Crow Wing County will guide us in this venture, and we feel safe in their hands knowing that they will advise us in our efforts to advance our county and develop its resources.

Remember this friends, no clique of men, no coterie of politicians or grafters, holds us by the collar and points our way. We will not hesitate to laud the men who are unselfishly devoting their efforts to advance our county, to develop its resources, and to make it better, richer and more prosperous. Our efforts will be employed to assist these boosters in every way possible.

We need the support of every clean thinking, clean living citizen of Crow Wing County and we do not hesitate to ask for it.

This periodical is a matter which concerns all of Crow Wing County and whether we live or die rests with you—Mr. Citizen of Crow Wing County.

**T**HE HOTEL OF  
 HOME OF THE TRAVELING MAN, TOURIST AND SIGHTSEER  
 Rooms Cool in Summer  
 Warm in Winter  
**Brainerd**  
**The Ransford**  
 O. H. JOHNSON, Prop

The Men Who Find Real Pleasure in a Cigar Smoke

**The COMMODILA and NEMO**

JOHN T. IMGRUND, Manufacturer of FINE CIGARS

Telephone No. 44. 323 So. Sixth St.

BRAINERD

MINNESOTA

OPPOSITE THE NEW CITY HALL SITE

THE FARMERS STORE

**Firnstahl & Vadnais Co.**

Gardner Block Phone 404

**Brainerd, Minn.**

OUR MOTTO: The Best of Everything to Eat.

Office Telephone 422

Residence Telephone 431J

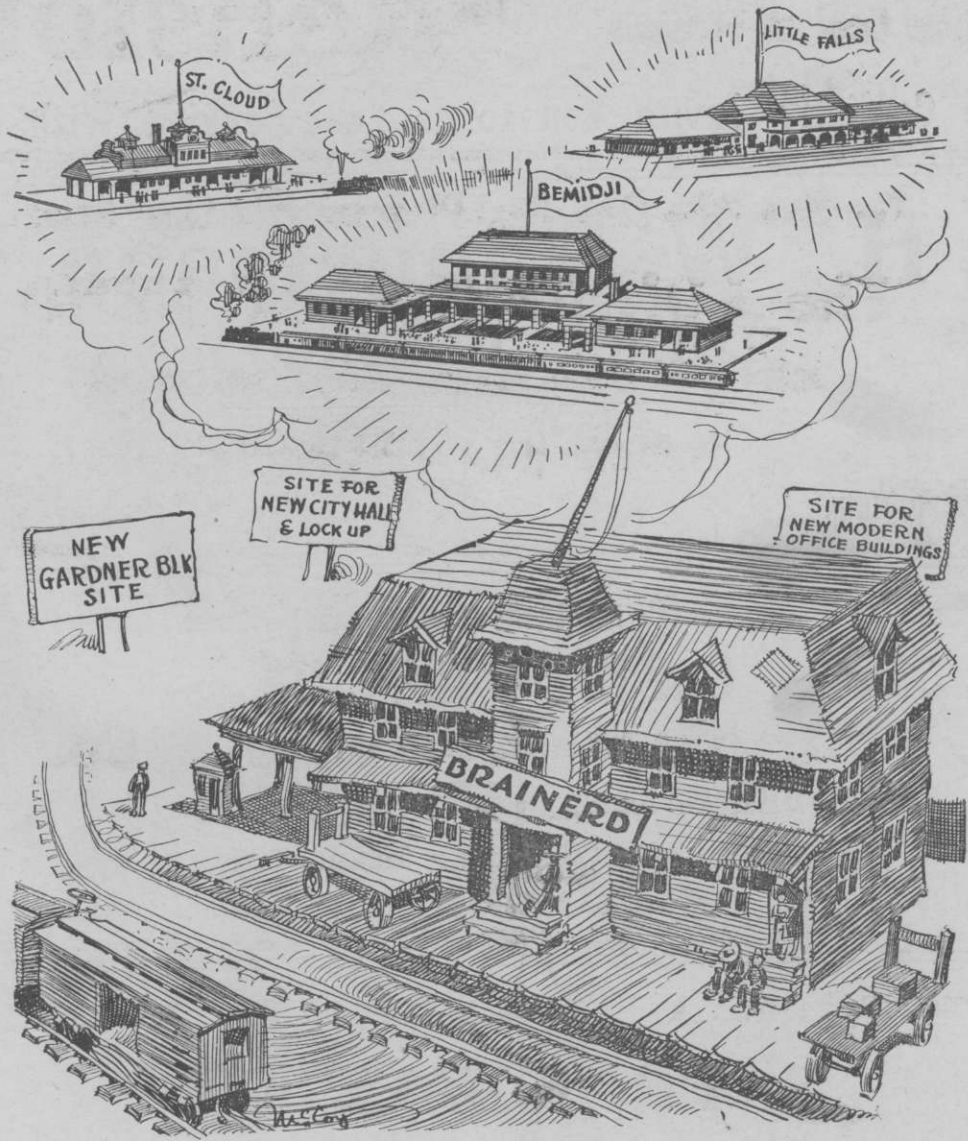
**GEO. H. GARDNER**  
**LAWYER**

**Brainerd**

**Minnesota**

General Practice, Real Estate and Insurance.





Brainerd Dreams of a New Depot.



# FIRST NATIONAL BANK

BRAINERD, MINNESOTA

The Oldest and Largest Bank in Crow Wing County

Deposits over ONE MILLION DOLLARS

We Cordially Invite You to do Your Banking With Us.

# H. W. Linnemann

CLOTHES OF QUALITY

FOR

Men and Boys

BRAINERD, MINN.

CROSBY, MINN.

We Have the Best Equipped Alleys in the Northwest

## CAMPBELL'S

R. A. CAMPBELL, Proprietor

Billiard Room and Bowling Alleys

Cigars, Tabacco, Confectionery and Soft Drinks

BRAINERD

MINNESOTA

H. F. MICHAEL, Pres. & Treas.

G. A. BEAL, Vice Pres.

A. B. MICHAEL, Sec.

## H. F. MICHAEL CO.

Brainerd, Minn.

Sell Everything a Woman Wears but Shoes.

We Give Green Trading Stamps Too

# THE CROW WING COUNTY DIGEST

A MAGAZINE PUBLISHED MONTHLY AND ISSUED ON THE TENTH DAY OF EACH MONTH

DEVOTED TO THE ADVANCEMENT OF CROW WING COUNTY AND THE DEVELOPMENT OF ITS RESOURCES

A. N. JACOBS, Manager.

Main Office at Brainerd, Minn.

Edited By H. D. WILSON,

Application for admission to the mail as second class matter pending

## EDITORIAL

IN INTRODUCING the Crow Wing County Digest to the citizens of Crow Wing County there are certain policies and principles which we will lay down to the readers and advertisers and then

OUR chief efforts will be devoted to the advancement of Crow Wing County and the development of its resources and, this development will be in the hands of the Boosters of Crow Wing County. It is only natural that we will be in-

AT THIS time we will state emphatically that we do not accept paid political advertisements in any manner, form or shape. THIS IS FINAL. Deeds—only will win a place of credit in our

AT THE proper time and after proper investigation we will endorse those men whom we

AND—when the Digest speaks with an untainted and knowing tongue it is intended to tell

RELIABLE Range news is very scarce these quiet days and the best we can hope for on the Cuyuna Range right now is a change for the better. Day after day reports reach us to the

To advertisers we have this to say: If your advertisement appears in the Digest it has the endorsement of that periodical. No advertisement will find space in our columns until we feel that we can recommend these advertisers as

endeavor to carry them out. First and above everything else WE WILL TELL TRUTHS ABOUT CONDITIONS AND CIRCUMSTANCES.

interested in the men we send to Congress and to the State Legislature; also to the men whom we place in the Court House to guard our interests and watch over the welfare of our county. We will try to endorse men of ability and honor.

columns. Men who do things for Crow Wing County are the men to whom we will give our vote of confidence and recommend to the consideration of our friends.

think merit the endorsement of a periodical devoted to the advancement of Crow Wing County

truths to which the thinking people of Crow Wing County will give thoughtful consideration.

effect that a revival of the old prosperity of Crosby will return and we, who, are interested in the development of our county sincerely hope that those happy days return again.

being men of reliable character and the goods they sell as being what they recommend them. We do not accept patent medicine advertisements nor do we accept other advertisements which we may deem objectionable.

**BYE & PETERSON****Clothing and Gents' Furnishings****Boots and Shoes a Specialty**

Cullen Block, 7th and Front Streets

N. W. Tel. 105

BRAINERD

MINNESOTA

**We Make the Famous Roman Meal Bread****ERICSON BROS. BAKERY**

Wholesale and Retail

LARS ERICSON, Manager

Lagerquist Block, 324 6th Street S. Tel. 512

BRAINERD

MINNESOTA

We Have the Exclusive Agency for the Kimball and Packard Pianos

**MYHRA MUSIC HOUSE****Player Pianos, Rolls, Sheet Music, String Instruments**

BRAINERD

MINNESOTA

**THE DOWER LUMBER COMPANY****Lumber, Lath, Shingles, Lime, Cement and Brick****All Kinds of Sash, Doors and Mouldings**

BRAINERD

WOODROW

DEERWOOD



## BRAINERD

One of the problems that is deeply interesting to the minds of Crow Wing county people is; "Shall we have a new court house?"

At this time it is hard to say what the trend of public opinion is, but it is certain the men who are most conversant with the requirements of the county's affairs, agree that we do need a new and larger court house. Crow Wing county has developed rapidly in the last few years, and the records on file as well as the daily volume of business transacted require larger quarters and more advanced facilities for the economic administration of the business of Crow Wing county.

This is of vital interest to the people of the whole county, as much to the advantage of the people of Little Pine and other distant townships, to the villages of Jenkins, Deerwood and Fort Ripley as it is to the people of Brainerd, and the Digest would like to have the opinion its readers on this question. Write us a letter telling what you think of the matter, and let us have a general discussion of this question.

---

The history of Brainerd is closely interwoven with the development of its tributary territory by the activities of the N. P. and the M. & I. railroads. It goes without argument that the roads, making Brainerd the division headquarters, and furnishing employment to an army of men in the railroad shops, have actually brought into Brainerd more than they have ever taken out and the Digest believes that the people of Brainerd owe a certain amount of loyalty to the hand that has helped to feed it. It is true that Brainerd has not the advantage of some of her sister cities in the Northwest in the matter of a depot and terminal facilities that the yards, right in the heart of the city are unsightly and a menace to the safety of the inhabitants, but these conditions can be changed by bringing to bear upon the railroad officials, the proper influence and petitioning for a more sightly and convenient depot, and one more in harmony with its environment.

The Security Nat. Loan Co. now has a branch office at Brainerd with an authorized capital of \$100,000. Its main office is at International Falls, Minn., and between these two thriving towns it surely has a splendid field to operate. The primary object of this company is to aid in the development of the agricultural resources of Northern Minn. and in aiding the farmers to accomplish these results, Mr. R. R. Livingston, who is in charge of the office in Brainerd spoke in very high terms of the great agricultural possibilities of Crow Wing County.

---

### BRAINERD CHAMBER OF COMMERCE

The Brainerd Chamber of Commerce was organized for the purpose of promoting the civic welfare of Brainerd and Crow Wing county. An initial membership of six hundred and fifty at \$10.00 per annum has been secured to date, with every prospect of increasing this as soon as the permanent organization is perfected. With the funds thus raised it is proposed to assist in public enterprises, advertise the city and county, bring in new enterprises and in a general way inform the people of the wonderful resources of our county. A man who has had experience in civic work will be chosen as secretary and it will be his duty to devote all his time in advertising Brainerd and the county and in inducing men of means to become interested in the many good things Crow Wing county has to offer. All residents in the county are urged to take an interest in the Chamber of Commerce and enroll as members.

At the organization meeting of the Chamber of Commerce Wednesday evening July first the following officers were elected: Judge J. T. Sanborn, President; D. A. Haggard, Vice President; F. A. Farrar, Treas; W. A. Nelson, Temporary Secretary; Directors: Sam Adair, Carl Zappfe, Geo. D. LaBar, Edw. Crust, and Rev. G. P. Sheridan.

## JOHNSON BROS. & HALBERG

It Would Pay You to See Our Line of  
**Clothing, Shoes and Gent's Furnishing Goods**

IRON EXCHANGE BUILDING, 6th AND LAUREL STS.

BRAINERD

MINNESOTA

Pictures and Picture Framing

## D. E. WHITNEY

**Undertaker and Embalmer**

I Give All Cases My Personal Attention

Tel. 31

720 Front St.

Night Call 166

BRAINERD

MINNESOTA

## Christ Schwab

**BRAINERD FRENCH DRY CLEANING**

Repairing and Pressing of Men's and Ladies' Garments

624 LAUREL ST.

BRAINERD

MINNESOTA

**R. D. KING, Sporting Goods**

**IRON EXCHANGE, BRAINERD, MINN.**

Everything in Season

**KING RENTS GUNS**

A FULL LINE OF FLASH LIGHTS AND BATTERIES

Fishing Tackle That Catches Fish. Shells That Get The Game.

## BRAINERD

The traveling men of Brainerd are to be reckoned with when you try to accomplish things in that city and a more interesting and progressive organization cannot be found anywhere in Crow Wing county. The Brainerd council is the baby organization in the Northwest and like everything else in Crow Wing county it has grown by leaps and bounds. It has to-day a membership of fifty live wires, everyone of them boosting our county and carrying our good name all over the state. Brainerd must learn a lesson from the busy city of Crookston, where the U. C. T. boys are appreciated and respected for the good work they have done to advertise their home. The business men in Crow Wing county should get back of the traveling man and help him for Brainerd is fast becoming a Mecca for the "boys."

"Are you are a booster?" They are likely to ask you that any time in Brainerd, and there should be no reason why you should not be able to say "you bet I am."

There are over 400 hundred Boosters in the club, and each of them has the City of Brainerd and the County of Crow Wing ever in his heart and mind. It hardly pays to knock, because you never can tell when you are talking to a Booster. The Booster is always on the the job and can tell you things that you never knew about your county. We would not be so far amiss should we declare that the Brainerd Boosters Club has done more to advertise Crow Wing county than any any other organization. It is the citizens club and once every two weeks the members come together and discuss those things that are near to the hearts of every citizens in this city.

Does Brainerd need this or that improvement? Tell it to the Booster and he will boost this need until it becomes a realty. Is some big concern considering making Crow Wing County its home—if so—let the Booster know it and if persuasion or cordiality counts we'll land that enterprise. They are always spreading the gospel of truth—truth about our wonderful resources

and our great opportunities.

The Boosters have started a fund to erect an electric sign at the Brainerd depot. It will mean effective advertising for that city. The Boosters will get this fund—they never fail—but the citizens and business men of Brainerd must aid them in this and make it possible.

Brainerd owes much to the Booster's Club; they must not let it be ancient history in Crow Wing County—they must help it continue making history.

So here's sucess to you, Mr. Booster! The Digest will assist you in your efforts to advance Crow Wing County and develope its resources.

BRAINERD,—the city of opportunity, the shining star of the North has grown as has no other city in the Northwest. People from all sections of the country marvel at her advancement. The entire country is watching Brainerd grow and develope into a real metropolis of the Northwest. As a mining center in Minnesota it is only second to Duluth in importance, as a railroad center it has in its domain the largest car shops in the country and as an agricultural and dairying center it is fast taking its place among the first in the state. Many men and concerns have already profited by keeping in touch with Brainerd and only recently three large companies have incorporated and placed factories in that city. A new sash and door factory as well as the G. W. Holland Co., and Polk Construction Co., have only within a few weeks located here.

The new City Hall and lock-up is now a reality and it is expected that ground will be broken about Aug. 1st on its site next to the Iron Exchange Bldg., on 5th and Laural Sts. The new city hall and lock-up will cost \$75,000 and the architects for the plans are Harris and Alden of St. Paul. Sometime this fall ground will be broken for the Syndicate Block, a modern office bldg., to be erected by George H. Gardner, representative of the Northern Trustee Company, on the corner of 6th and Laural Sts. The plans



**FIRST NATIONAL BANK****The Bank of Personal Service****We do a General Banking Business**

Stockholders' Responsibilities Over \$1,000,000

RIVERTON

MINNESOTA

**Koop Mercantile Co.****Staple and Fancy Groceries**

Brainerd

Crosby

Riverton

**EDWARD R. SYVERSON****Everything in Real Estate and Insurance****Ironton, Minnesota**

"Where the Mines Are"

**The Dower Lumber Co.****Branch Yards at**

Crosby

Ironton

## BRAINERD

for the structure were drawn by Vernon Price, a Duluth architect. The building will be a four story structure and will cost about \$50,000.

Other plans for the future development of Brainerd are now being considered and this sum-

mer and fall may see much in the line of new improvements in this hustling city of the North.

Even an honest man cannot afford to be robbed these days for the ghost of the knocker walks everywhere.

## COMMENT ON THE RANGE

WOODROW is now going after a postoffice and efforts will be made to induce the Northern Pacific railway to move the depot from Loerch to this new town.

THEY are doing things in Woodrow and you need not be surprised if some day you find a real city where that busy little town now stands. Woodrow is located eight miles east of Brainerd on the Northern Pacific railway and is destined to become one of the chief mining towns in Crow Wing county. A track now extends from Loerch three quarters of a mile inland to this new village, and everything points to a bright future for Woodrow. It now has two general stores, restaurant, a bowling alley, a lumber yard, and a blacksmith shop. The main street is being laid and graded and the townsite man, Louis Shallman, reports the sale of many town lots.

The mine reports the prospects of a successful year and the First State Bank, Riverton's newest institution is now ready to take care of the finances of this progressive town.

RIVERTON is to-day probably the most active town on the Cuyuna Range and when one asks the Riverton merchant how he finds trade, he cheerfully replies, "Good". This little village has in its corporate limits some of the greatest boosters in Crow Wing County and that probably explains why it continues to grow and prosper.

MAGGANESE is located four miles south of Ironton, has a first class hotel, livery, two general

stores and a postoffice. It has train service every other day and is within walking distance of the Iron Mountain Mine

THINGS are not quite up to their standard this year in Cuyuna and it seems as if some of the effects of last year's strike are still felt. The business men, however, are not complaining.

CUYUNA too, is doing much to develop its town and its newest improvement is the sewer and water system which was installed last month.

WHEN J. W. Hill, the Ironton townsite promoter said, "I'll make Crosby go some to keep pace with Ironton", the people regarded it as a joke but that there was some truth in it is now evident.

IRONTON seems as active and the business men as aggressive as they were the day Ironton made that boast and issued a challenge to its sister city. If a town's progress is judged by its development, Ironton surely need not fear for its future.

THE Spina Hotel is one of the finest hotels in the Northwest and Ironton as well as the entire county can feel proud to number the Spina among its own. The new First National bank is nearing completion as is Seafeld's new garage. Even the Ironton News reflects the prosperity of this busy range town and is now located in its new quarters on Main street.

EVERY thing about Ironton spells progress and prosperity.

## FIRST STATE BANK

Farm Loans, Real Estate and Insurance  
Bonds and General Banking

CUYUNA

MINNESOTA

Agency For News-Tribune

We Sell Steel Row Boats

## Riverton Mercantile Co.

Staple and Fancy Groceries

RIVERTON

MINNESOTA

## WOODLAND PARK ADDITION TO BARROWS

An exceptional opportunity of procuring some of the choicest lots to be found in any city, in this new Cuyuna Range Town, in the richest part of the state. Abundant advantages and resources; millions of tons of iron ore to be mined. For further information address

### Barrows Realty Company

First State Bank, Barrows, Minn.

213 Providence Bldg., Duluth, Minn.

STRICTLY MODERN

STEAM HEAT

RATES

\$2.00 PER DAY

## St. Louis Hotel

Cuyuna

Minnesota



## COMMENT ON THE RANGE

**THE RIOT AT WOODROW**—Such a riot as occurred at Woodrow on the morning of July 7 does not in any way aid in the development of our county neither does it add to the good name of Crow Wing county, nor maternally assist us in our progress. These are times when the people in other sections of the country judge us by our disposition and the disposition of a people in any community is proven only by deeds of its citizens.

This is a white man's country and we have no room for such undesarables as were those men who incited the riot and caused that unfortunate incident to occur at Woodrow.

In his greed for cheap labor the mining magnate does not hesitate to employ those people who are a menace to the community in which they choose to live and a detriment to the property of their neighbor. It is to be deplored that these conditions should exist in the state of Minnesota and we cannot hold out the olive branch to those interests which bring under our roof the riff-raff of an undeveloped and uncivilized people.

We hold nothing against the mine owners. On the other hand we are deeply indebted to these interests which did so much to develop our resources and give us our place among the foremost counties in the state but we do feel that they do us an injustice and inflict such damage as cannot be so easily repaired when they invite those undesirables into our county which is striving to advance in the march of civilization and progress.

Bear in mind that neither Woodrow nor any other town on earth can grow and develop into a real city under the conditions that are likely to prevail where such undesirables are tolerated.

**THERE** appears to be no regular market for iron ore this spring, and as a result shipments are small. Why there should be so little demand for ore this year, we so far west do not know and to draw conclusions from the thousand and one reasons, we gather from citizens of the Range would be a problem too difficult for us to solve. To find the cause we must go a long way

from Crosby. It is only the effect that we can feel.

**FROM** what we believe to be a reliable source, we learn that the Hans Anderson mine within a stones throw of the Spaulding Hotel will soon begin work. This comes as good news to the citizens of Crosby.

**ASIDE** from the temporary depression from a mining standpoint Crosby is as busy as ever. Business men report a fairly good trade but not quite up to its standard of a year ago. Traveling salesmen report that the feeling of uncertainty which is prevalent throughout the country exists among the business men of Crosby. "They do not buy as freely or in as large quantities as they did last year but they do buy oftener and keep up the average pretty well", said a drummer for a wholesale grocery company of Duluth.

**THAT** the people in Crosby have confidence in the future of their town is evident from the new buildings that are being erected. The First State Bank is now located in its new quarters, in the Pitt Block, which is one of the finest structures of its kind in the Northwest. Other plans are being made for the development of this little city and that Crosby will once again revel in its old time glory is certain.

Yes Bill—it is mournful to hear them sing—"Nobody knows how dry I am."

**NEW LODGE AT RIVERTON**—William E. Barber has completed the organization of a lodge of the Modern Brotherhood of America at Riverton. The lodge starts with forty members. As the population of Riverton is only 108 the lodge takes in nearly all of the grown people there. Mr. Barber has just been appointed district deputy of the sixth congressional district and this is his first organization work.

The range being his home and almost everybody here knowing him personally it gives him one of the best fields in the state for Brotherhood work.—Ironton News.

## "IF"

If you keep your head when all  
about you  
Are losing theirs and blaming  
it on you;  
If you can trust yourself when all  
men doubt you,  
But can make allowance for  
their doubting, too;  
If you can wait and not be tired  
by waiting,  
Or being lied about don't deal  
in lies,  
Or being hated don't give way to  
hating,  
And yet don't look too good,  
nor talk too wise;  
If you can dream—and not make  
dreams your master,  
If you can think—and not make  
thoughts your aim,  
If you can meet with Triumph  
and Disaster  
And treat those two imposters  
just the same,  
If you can bear to hear the truth  
you've spoken  
Twisted by Knaves to make a  
trap for fools,  
Or watch the things you gave  
your life to, broken,  
And stoop and build 'em up  
with worn-out tools;

If you can make ore heap of all  
your winnings  
And risk it on one turn of pitch-  
and-toss,  
And lose, and start again at your  
beginnings  
And never breathe a word  
about your loss;  
If you can force your heart and  
nerve and sinew  
To serve your turn long after  
they are gone  
And so hold on when there is  
nothing in you  
Except the Will which says to  
them; "Hold on."  
If you can talk with crowds and  
keep your virtue,  
Or walk with kings—nor lose  
the common touch,  
If neither foes nor loving friends  
can hurt you,  
If all men count with you, but  
none to much,  
If you can fill the unforgiving  
minute  
With sixty seconds' worth of  
distance run,  
Yours is the earth and every-  
thing that's in it,  
And— which is more, you'll  
be a man, my son.  
—Rudyard Kipling.

**ABOU BEN ADHEM.**

Abou ben Adhem—may his tribe  
increase—  
Awoke one night from a deep  
dream of peace  
And saw within the moonlight  
in his room,  
Making it rich and like a lily in  
bloom,  
An angel writing in a book of  
gold.

Exceeding peace had made Ben  
Adhem bold,  
And to the presence in the room  
he said,  
"What writest thou?" The vi-  
sion raised its head  
And, with a look made of all  
sweet accord,  
Answered, "The names of those  
who love the Lord."

"And is mine one?" said Abou  
"Nay, not so,"  
Replied the angel. Abou spoke  
more low,  
But cheerily still, and said, "I  
pray thee, then,  
Write me as one that loves his  
fellow men."

The angel wrote and vanished.  
The next night  
It came again, with a great  
wakening light,  
And showed the names whom  
love of God had blessed,  
And, lo, Ben Adhem's name led  
all the rest!

—Leigh Hunt.

**RELIGION.**

Religion is the greatest thing  
—one might say, the only thing.  
The relation which one bears to  
the Supreme Being is the most  
important. It is the background  
of life, the sky of destiny. Now,  
so many people do not get much  
out of their religion, and reli-  
gion certainly does not get much  
out of them. I want you to get  
much and to give much. Inter-  
pret life in the terms of the per-  
sonal creator, sympathize with  
life in terms of righteousness,  
will life as a personal good.—  
Charles F. Thwing.

**THE NEED OF A NAVY.**

We see before our eyes at this  
moment a great and populous  
empire, now a great and popu-  
lous republic—China, which has  
suffered partial dismemberment  
purely because she has permit-  
ted herself to become impotent  
in war, so that she has no navy  
and not an adequate army. In  
consequence Russia, Japan, Ger-  
many, England and France now  
hold Chinese provinces, some of  
them themselves the size of em-  
pires. If the American people  
deliberately chose to follow in  
Chinese footsteps, doubtless  
some decades would pass before  
we should suffer to the extent  
of China, but long before that  
time had come we should have  
had to abandon all pretense of  
upholding the Monroe doctrine,  
we should have had to abandon  
Panama and Alaska and every  
insular possession, and we  
should have had to surrender all  
right to say what immigrants  
shall and what immigrants shall  
not be admitted to our country  
and the terms upon which they  
shall come here and become  
citizens or hold land. Let it be  
understood that every man who  
votes to stop building up the  
navy or stop fortifying the canal  
is voting to put us in a position  
where we cannot even resent in-  
sult, let alone ourselves insult-  
ing others with impunity. Let  
us remember that the policy of  
uniting the unbridled tongue  
and the unready hand is a pol-  
icy of criminal folly. The most  
dangerous of all positions for  
any nation is to be opulent, ag-  
gressive and unarmed.—Theo-  
dore Roosevelt.

**Preferred the Present.**

"How did you choose between the  
two?"

"The one I rejected said I would be  
an angel when I die, and the one I ac-  
cepted says I am an angel now."—  
Houston Post.

**A Conundrum.**

What is that which is always found  
in place, yet always out of order? The  
letter "c."

**LULLABY.**

Sweet and low, sweet and low  
Wind of the western sea.  
Low, low, breathe and blow,  
Wind of the western sea.  
Over the rolling waters go;  
Come from the dying moon and  
blow,  
Blow him again to me,  
While my little one, while my  
pretty one sleeps.

Sleep and rest, sleep and rest.  
Father will come to thee soon  
Rest, rest on mother's breast.  
Father will come to thee soon.  
Father will come to his babe in  
the nest.  
Silver sails all out of the west  
Under the silvery moon.  
Sleep, my little one, sleep, my  
pretty one, sleep.

—Tennyson.

**SONG OF THE FAIRIES.**

We, the fairies, blithe and antic,  
Of dimensions not gigantic,  
Though the moonshine mostly  
keep us,  
Oft in orchards frisk and peep  
us.

Stolen sweets are always sweet-  
er,  
Stolen kisses much completer;  
Stolen looks are nice in chapels;  
Stolen, stolen be your apples.

When to bed the world are bob-  
bing,  
Then's the time for orchard rob-  
bing.  
Yet the fruit were scarce worth  
peeling  
Were it not for stealing, steal-  
ing.

--Thomas Randolph.

**Torture.**

A shrewd old doctor once said: "If I  
wanted to torture an enemy I would  
tell him he had an incurable disease.  
His life would be miserable, and he  
would be almost certain to die before  
his time."

**Yukon Beavers.**

In the Yukon region, far back from  
the haunts of man, beavers are still  
quite plentiful.



## Deerwood, "The Gateway to the Cuyuna Range."

Deerwood is not a mining town—and for that reason it is not suffering this season on account of the dullness in the ore market. Deerwood is the oldest village on the range. It has reached maturity and no flurries in the eastern ore market set its business men a-worrying. Deerwood is located in a rich farming district. It is the market place for the great Bay Lake fruit district—one of the richest farming communities in the county if not in the state. It is the market place for the German settlement at

Hats off to Brother Mussey and Comrade Searl of Deerwood. They made a trip to the county seat and told those merchants and clerks a few things they did not know about Deerwood

It's alright friends, Herman Lefko of Crosby believes the Cuyuna Range is coming back to its own and we are sure of it now that Herman declares his place is no longer for sale and he means

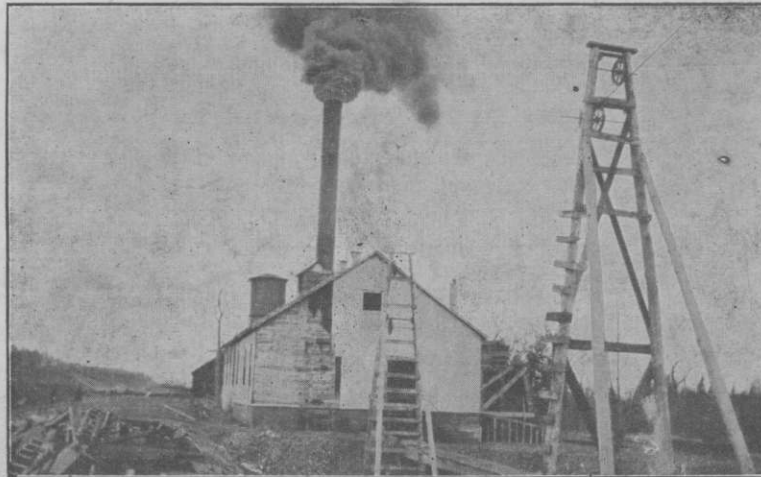
Cedar Lake, and the thrift that makes a Gern an farmer famous has its effect upon the business interests of Deerwood. The present season has been a good one for this village. Business has been brisk and prospects for a successful year could not be better. A \$25,000 water and sewer system will be constructed in Deerwood this season, the contract for the former having already been let. A number of residences will be erected during the next three months. Several new business firms have entered the commercial life of Deerwood this season.

and the way they boosted for the "Gateway of the Cuyuna Range" was not slow.

We admire a good clean booter, who is honest and whose voice rings true.

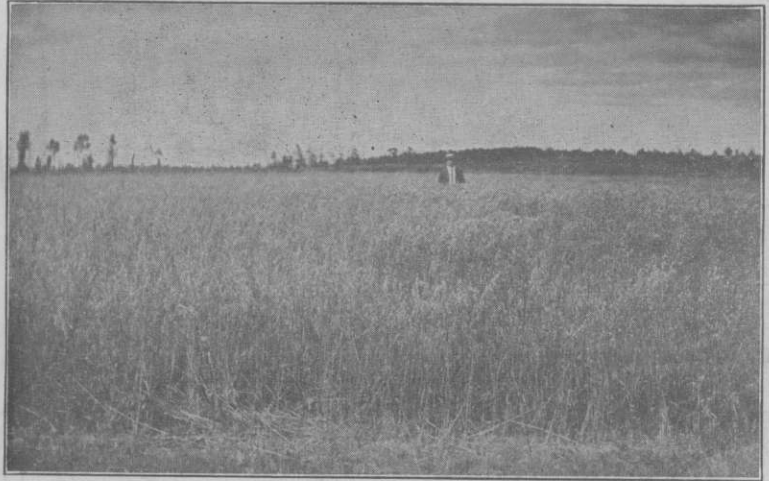
to stick to the ship.

Bully for you old timer we thought you'd come around.



CROW WING COUNTY MINE—Courtesy of Schrader Land Co.

**Crow Wing County  
Farm Scenes**



**Courtesy of The Schrader  
Land Co., Pequot**



## Endorsed By the Brainerd Booster Club

The following resolution was offered by professor W. C. Cobb and received a unanimous vote by the Brainerd Boosters Club at its regular meeting Friday evening, June 26.

"Resolved, by the Booster Club of Brainerd, Minn., that after examining the plan of the proposed Magazine, to be known as the Crow Wing County Digest,

that the proposition appears to this club as a move in line with good boosting for Crow Wing county, and that therefore they give it their hearty and cordial endorsement and recommend it to all good citizens and boosters."

Signed,

ANTON MAHLUM

JOHN HOFFBAUER

Pres. and Sec.y.



Pelican Better Farming Club at the Home of W. H. Morrison

## THE FIRST NATIONAL BANK

The Bank of Personal Service

We Do a General Banking Business

Stockholders Responsibilities Over \$1,000,000

IRONTON

MINNESOTA



## Mining Notes

The Rowe Pit mine at Riverton was the first mine to ship ore this year. This prediction was made some weeks ago and speaks well for the Pittsburg Steel Ore Company and for the prosperity of Riverton. The ore in the Rowe mine can be removed more cheaply than in any mine in this locality as the process for removing the crude ore is made possible by the large hydraulic plant which operates at that mine. To date over two hundred cars have been loaded and it is expected that a record will be made for the Rowe mine this year.

The Interstate Iron Company, a large eastern mining concern, made history for the Cuyuna Range last week when it placed drills on the property of the Cuyuna Iron and Manganese Ore Company in 10-46-29, adjoining the Pennington mine. The Interstate Company apparently is well satisfied with the showing made by the Cuyuna Iron and Manganese Ore Company and it is expected that this company will test out the property in the near future and add greatly to the ore shipments on the Cuyuna Range. The significance of this confidence the Interstate Company has placed in the Cuyuna Range has done much to revive the hopes of the people throughout Crow Wing County.

The Cuyuna Iron and Manganese Ore Co. has had great success on this property and the results that they have obtained in just one year has convinced them they are working on one of the largest and richest bodies of iron ore in the country. With all these assurances Crow Wing County need not worry for its future position in the mining world.

The Thompson Pit of the Inland Steel Company have placed a steam-shovel at work on their property and the prediction is made that more than a quarter of a million tons of ore will be ready for shipment sometime next month. Although the Pennington shovel is at work this season it has

done no shipping to date. The Cuyuna—Mille Lacs reports some shipping but little can be learned from the Cuyuna Duluth mine located at Ironton.

The Adams mine at Oreland is at work and a crew of men are busily engaged at drifting and stock-piling. The Seafield Exploration company with offices at Ironton, reports a brisk season and are operating a drill for the Cuyuna—Sultana company and on the Dehning property across Rabbit Lake where a large body of rich ore has been found. The Wilcox mine at Woodrow has fifty men at work and has laid rails over half the way from Loerch to the mine. Work with number 2 shaft of the Brainerd Cuyuna mine, located within the city limits of Brainerd is progressing rapidly and the shaft is now down seventy five feet. No. 1 shaft which was flooded recently is now clear to sixty five feet.

The Longyear Exploration company is not very enthusiastic over the results obtained at the county poor farm as with the completion of the third hole but little ore was found. A fourth hole will be made at a distance 600 feet southwest of the third hole. As the Longyear company are under contract and obliged to drill nine holes there is still hope of good results. Should the property be found desirable for mining purposes it is expected that the Longyear company will ask for a mine lease from Crow Wing County as they are the present owners of that option.

A branch assay office has been placed at Riverton by C. J. O'Connell and the Rogers Brown Ore company have added to its force at Crosby.

Such conditions as these on the Cuyuna Range predict a revival of the old prosperity and with the opening of the Hans Anderson mine at Crosby we may soon expect to see something like the good old activity that prevailed on the Range last year.

## History Makers of the County

I believe that Crow Wing County is the greatest agricultural county in the world, and I draw this conclusion from the excellent results I have obtained in this county. I have four hundred acres of my eleven hundred and fifty acre farm under cultivation and have not had a crop failure since I have personally given the farm my attention. These eleven hundred and fifty acres of land cost me on an average of \$7.00 per acre and I could sell every acre of it for \$55.00 to-day. This can be said of any land in this section of the county.

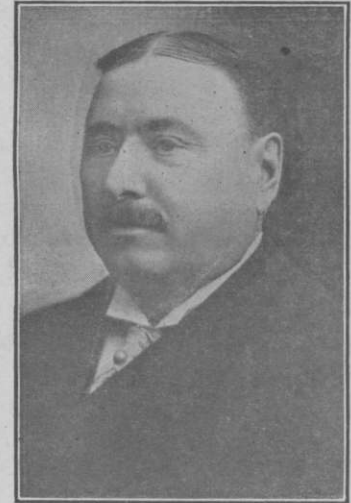
My hobby is oats, rye, corn and potatoes and no better results can be obtained in these products any where else in the world than here. This is a great berry county and we can raise as good plums and red currants here as in any county in the country. Our clover fields are the greatest on earth and any farmer in Crow Wing county who has not learned this, does not get up early enough in the morning. Farming is a science in itself. Land must be worked right and in time in order to get the best results. I work my farm as a farm should be worked and that is why I never had a crop failure.

As a dairying community Crow Wing County is as good as any, if not better. Our water is the purest to be found and if the farmers in this county take the proper care of their cattle they will get wonderful results.

The one great trouble with the people in this county is that they do not encourage the farmer.

### J. C. BARBER

Down on a farm in Hammond, St. Lawrence County, N. Y., about fifty years ago, lived a young man with a head for mathematics and farming who was playing hard at the game of life. Farming in those early days was crude and unprofitable and young and ambitious as he was, the spirit of wanderlust seized him and he started west to make his fortune. He got as far as Whitewater, Wis., and there hired out as a farm hand for \$8.00 a month. But—this was rather slow progress for a young man who was bent on earning a million. On September 10th, 1862 he paused in his quest for fortune and volunteered to serve in Uncle Sam's army as a private in the



J. C. BARBER

The farmer should have a central market at Brainerd where he could bring his produce and get a just price for it. The business men in Brainerd should take care of this and I for one will do my share to make this possible. By J. C. Barber for the Crow Wing County Digest.

Civil War. He gave his effort to his country for four years, returning after the war to resume his place in life among men.

In 1873 this young man, then at the age of twenty-eight came to Brainerd and it is at this time that J. C. Barber was introduced to the people of Crow Wing county. He became identified with the Northern Pacific Railway as a common shop hand in the car shops at Brainerd and after years of perseverance and effort became so valuable to this corporation and its interests that he was promoted to Master Car Builder. Mr. Barber was continually in the service of the Northern Pacific for seventeen years with the exception of the two years he served as superintendent of the Texas Pacific Railway.

Even way down in the south they had heard of the ability of our J. C. Barber.

During all these years Mr. Barber was studying the new things in railroad work and his master brain conceived the idea of the swing hanger car truck which he invented in the fall of 1897. To-day five hundred and ninety-four thousand of these trucks are in use and the name of J. C. Barber is written on the immortal pages of history as a genius. His latest invention is that of a self clearing coal car which is recognized as the greatest invention of the present time in railroad improvement. Mr. Barber spent four years of study and labor on this invention until he finally perfected the car and gave it to the railroad world.

But the time came as all times do come when J. C. Barber the inventor, the mechanical genius felt a desire to once again return to nature and lead the life of a farmer. Perhaps it was a fondness to live over again the days of his childhood. At any rate it is at this time that J. C. Barber, the farmer, comes near to our hearts in Crow Wing county. It is at this time that he discontinued making history for J. C. Barber and commences to make history for Crow Wing county.

It is hardly ten years ago that Mr. Barber, grown rich by his great inventions, left his big factory in Chicago with the intention of buying a small piece of land near Brainerd and settling down to live the life he discontinued living as a boy back in New York state. Since that time he has kept on buying land until to-day he prides himself on being the owner of a tract of eleven hundred and fifty acres of the finest land in Crow Wing county. Each spring he returned to devote his time to the soil and educate the farmers in what he terms the science of farming and, let it be understood that J. C. Barber is a scientific farmer if ever there was one and what he has done to encourage the farmer in Crow Wing county cannot be measured in mere words.

The greatest history makers in any county are the men whose praises are yet unsung. And now without any further ceremony or apologies I shall commence to sing aloud the praises of the man who knows and has a message to send to the

people of our great county.

To begin with I will say the most progressive farmer, if not the most progressive individual in the county, and this statement can be confirmed by any farmer at Norway Lake or any citizen in Brainerd. He has money and plenty of it. that is true and those who know him will not begrudge him the thousands or millions he may have, for a man of more lofty ideals or cleaner purpose never lived in the jurisdiction of this great county.

Mr. Barber does not need to tell about his deeds, nor sing his own praises. There are plenty in Crow Wing County to do that and if these people who have observed Mr. Barber and the results he has obtained never even uttered one little word to praise him, his place in the history of our county would be assured for he has done things which eyes can see and understanding realize. In four years he has cleared and put under cultivation four hundred acres of his large farm and obtained such results as could be attained only in the most fertile lands in the country. Of course it took many hundreds of dollars to do this and of course Mr. Barber did not do it all himself, but you can bet he did his share of it. Mr. Barber feels as much at home on his farm in overalls and a jumper as he does at Atlantic City in his finest linnen suit.

The produce of these four years of work was given to the people in his community—those men who helped him realize this ideal farm. Mr. Barber is a man of details—a man of deciplin—and every one of the thirty men who assist him in conducting his affairs at the farm know him and understand just what he wants. He is like the head of a big, prosperous family when at his farm and the men come to this big hearted man of affairs for advice and consul as they would to their own father. He treats his employes with consideration and they in turn honor and respect him for the man he is.

There is nothing that gives Mr. Barber more pleasure in than in showing visiters around his beautiful farm and summer home. He personally acts as their guide and explains all things of interest on his place at the same time showing a

(Continued on Page 23)



**S. E. OSCARSON CO.**

Dealers in

**General Merchandise**

DEERWOOD

MINNESOTA

**DEERWOOD CLOTHING COMPANY**

Men's and Boys' Clothes and Furnishing Goods. Complete Line of Men's Dress and Work  
Shoes. When You are in Town, Come and See Us.

Deerwood

Minnesota

**RIVERTON HARDWARE AND FURNITURE CO.**

LOUIS STOLCIS, Prop.

Dealers In

General and Builders' Hardware  
Sporting Goods and Gilt Edged Paints

RIVERTON

MINNESOTA

O. K. BROWN

R. A. MATHER

**BROWN & MATHER**

Complete Line of Gents' Furnishings  
Miners' Supplies a Specialty

RIVERTON

MINNESOTA

**J. C. BARBER**

(Continued from Page 21)

wonderful knowledge of farm produce and cattle. He can name every breed of cattle on his place at a glance, and he can tell a Plymouth Rock from Wyandotte at first sight. He is entertaining, cordial, interesting. He makes you feel that he is at your service and seems very anxious to bring you to a realization of the great agricultural and

dairying possibilities of our county.

Mr. Barber is seventy years old but looks about fifty, is five feet nine inches in height and weighs well over the two hundred pound mark. He has a wonderful personality which probably explains why he is the ideal of the people living at Nokay Lake and always has a fund of good stories to tell, but above all, he loves to tell of the good things he would like to do for Crow Wing County.

**Under The Court House Dome**

**HOLLAND INHERITANCE TAX.**—In April of this year, Crow Wing collected \$15,300.15 in inheritance tax from the Holland estate and the same time made a record for the county as well as Northern Minnesota. The Holland inheritance tax was the largest ever collected in the county and will net something like \$1,530 to our treasury, which amount is ten per cent of the tax. This division will be made in the early part of November.

The trials are over and the heroes have gone into training for the big event on November 5. Maybe the vanquished will be heard from too.

**SHERIFF'S OFFICE.**—The people of Crow Wing county are evidently reforming as the sheriff's office reports the issuance of but few warrants during the month of June in comparison with the number issued in June, 1913. This speaks well for a county of this size and population.

Both Auditor Smart and County Treasurer

Adair are busily engaged in collecting the tax levy, which this year amounts to \$357,000. It is expected that the county settlements will be made about July 15, and it will not be until then that definite or reliable information can be given.

Mr. Smart, however, stated that this settlement will be the largest in the history of the county. The March settlement totaled \$78,000 and the July settlement is expected to reach the \$150,000 mark.

**MARRIAGE IN THE COUNTY ON THE SLUMP.**—Dan Cupid must have lost his eagle eye or his arrows have lost their power to penetrate the human heart—or perhaps he did not visit Crow Wing county as often this June as he did in June 1913. At any rate that is what the records at the court house show and Clerk of Court W. A. M. Johnston has no reason for this decrease in marriages to offer. A year ago June 54 brides were led to the altar and this June only 32 met the smiling face of the pastor.

Hubert—Merrifield—Nisswa—These three little towns are making summer resort history for Crow Wing County. Pleasure seekers and the lovers of outdoor sports come all the way from St. Paul, Minneapolis, Duluth and even Chicago to cast for our black bass and bathe in

our clear waters. This has been a very successful season in these towns and great stories of wonderful fishing trips on our lakes in this locality reach us. It is not necessary to spend your vacation outside of our county, for Crow Wing has the facilities to make ones vacation enjoyable.

## FIRST STATE BANK

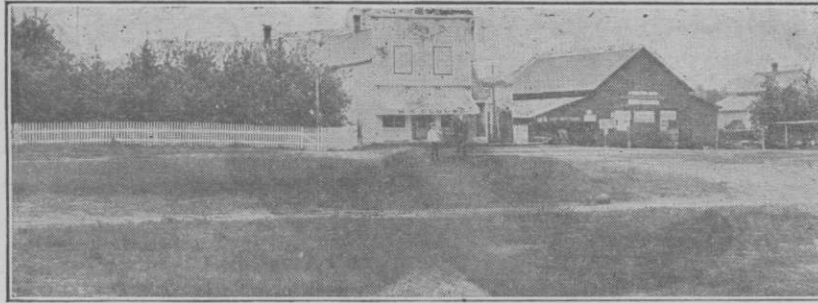
Real Estate, Loans and Everything in Insurance

We Do a General Banking Business

PEQUOT

MINNESOTA

F  
O  
R  
T



R  
I  
P  
L  
E  
Y

VIEW OF MAIN STREET, FORT RIPLEY

Fort Ripley is located on the Northern Pacific railway seventeen miles south of Brainerd and is in the heart of the richest farming and dairying section in Crow Wing county.

While other towns in Crow Wing county are suffering from business depression, Fort Ripley is humming with prosperity. The crops never were better, the people never felt more satisfied than now, and on all sides you see and feel the indications of a successful year.

Fort Ripley is an old town—as old as the history of that famous fort and visitors are shown the bridge which still stands, as a memorial of those olden times.

The businessmen of Fort Ripley are all alert to the possibilities of their town and work in harmony to develop the resources of their community. The leading businessmen of this hustling town are J. J. Tucker, M. A. Clouse and G. A. Raymond and L. J. Clouse.

## THE FARMERS STATE BANK

Real Estate, Loans and Insurance

F. G. SCHRADER, Pres.

J. E. ANDRUS Jr., Vice Pres.

B. MAURICE HANSON, Cashier

PFQUOT

MINNESOTA



## Around the County. News and Comment.

It would benefit all in Crow Wing county to keep their eye on Lenox, Crow Wing and Fort Ripley as it is in these three towns that our little prestige as a farming and dairying county was first established. The farmers here have obtained actual results from the soil and these little towns thrive solely on their agricultural and farming development. The business men in Brainerd especially should keep in touch with these towns if they wish to reap any of the harvest that these thrifty people are sowing. Bear in mind that Fort Ripley the busiest of these three towns is within equal distance from Brainerd and Little Falls and the latter city, which is in Morrison county, is today getting practically all of the business from that town.

It seems that all roads in this locality lead to Little Falls when in reality they should be leading to Brainerd the county seat. This is because Brainerd neglects these towns entirely while giving all their attention to the eastern end of the county. It would surprise one to know the amount of Crow Wing county's effort which goes to Morrison county from this end of the county. **GET BUSY, YOU GENTLEMEN IN BRAINERD AND GET ACQUAINTED WITH THIS SECTION OF YOUR COUNTY.**

Fort Ripley now has a fine creamery and is erecting a bank to accommodate the surrounding county. The business men as well as the farmers in that locality are of a thrifty sort and are marching right ahead in the progressive development of the resources of their community.

The Barrows mine has been shut down temporarily but the business men are hopeful and trust that there is some truth in the rumor that the mine will commence operations in a few weeks. Barrows is building a new \$25,000 schoolhouse and other improvements are being planned for the future.

Pequot is coming to the front of the procession with banners flying. Among the improvements are a new consolidated school house,

now in the course of construction, that when completed will cost about \$16,000. The Farmers State Bank is a new and enterprising concern that has started in this village, and is doing business in temporary quarters pending the erection of a new building. B. Maurice Hanson is the cashier, and he and his family have recently moved here from Albert Lea. There have been several new residences erected in the town and the farming country around is being considerably improved. The M. & I. Railroad Company have a crew at work building an addition onto the depot and improving it to handle the ever increasing volume of business. The Crow Wing County Fair is held here and the directors of the association are making preparations for a larger and better fair than ever this year.

Jenkins is on the tide of the advance in progress and prosperity. They have recently started a new farmers co-operative creamery and a newspaper will be installed by Ben Wagner of Pequot, the first issue of which is expected to appear in a few days. The crops around Pequot and Jenkins are looking the best that they have for years, and there is every prospect of big returns this fall for the farmer.

Emily is looking forward to the rising of the sun of prosperity and advancement. There is probability that some of the richest beds of iron ore in Minnesota will be found in that vicinity, and with the coming of a railroad that is eagerly looked for, this will be one of the richest localities in the county. There are three drill crews at work exploring near Emily and the indications are strong in favor of rich and paying deposits. There are several good farms also contiguous to Emily and the soil surrounding is of the most fertile and productive in the county.

Items of general interest from any part of the county will be gladly received by the Digest, A. N. Jacobs, Manager Brainerd, Minn.

## VERNON L. HITCH SELLS REAL ESTATE

Insurance and Rentals

Farm, City, Mineral and Lake Shore Property

BRAINERD

MINNESOTA



SITUATED in the finest resident district in Brainerd, overlooking Broadway North and two blocks from station. It is modern, elegantly furnished, sufficiently equipped and a modern new building.

ROOMS, both private and ward.

RATES are reasonable and special nurse furnished upon request.

X RAY coil for fluoroscopic examinations and Skiagraphic work. High frequency equipment

PATIENTS admitted suffering from Medical and Surgical diseases.

COMMUNICATIONS addressed to

### DR. JOSEPH NICHOLSON

Chief Surgeon

BRAINERD

MINNESOTA

## BRAINERD LAUNDRY

C. A. BEVIER, Proprietor

416 S. 6th Street

Phone 411

You can trust us with your duds  
 Because we are careful with the suds,  
 To please you we will do our best,  
 Just call four-eleven—we'll do the rest.

## Representative Men of Crow Wing County

### JOHN C. MICK OF RIVERTON.



John C. Mick born at Montpelier, Williams County Ohio, in 1879 moved to Minnesota at the age of twenty-two and has been indentified with the Ranges for the past thirteen years. Seven years of this time was spent in the banking business at Hibbing and Buhl, Minnesota. In 1908 he moved to Calumet, Minnesota and entered the lumber business in that town. He served as post-

master and mayer of Calumet for three years and in 1912 followed the trend of prosperity and moved to Riverton where he is associated with the Northwestern Land & Lumber Company as it's manager.

Mr. Mick is of Scotch and Irish descent, possesses a pleasing personality and is said to be one of the best handshakers in Crow Wing County.

He is the present mayer of Riverton and a real CUYUNA RANGE BOOSTER.

### W. H. GEMMELL.

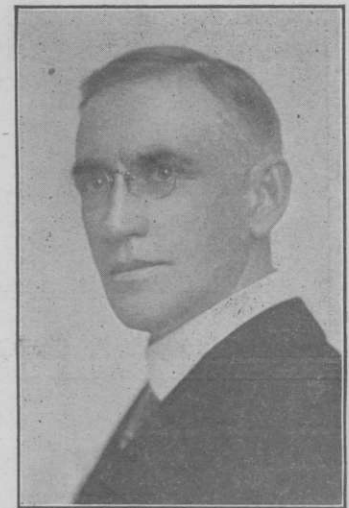
W. H. Gemmell and the Minnesota and International Railway are synonymous to the people of Brainerd and Crow Wing County. He has had charge of the Railway he represents for the past fourteen years, has seen it more than double in mileage during that period and its business grow in volume and importance each year. Every improvement he has made in train service and equipment has added to the convenience and comfort of the people of Brainerd and Crow Wing County and he ever has in mind the best interests of this locality.

Mr. Gemmell stated to this

magazine that its creed as shown on the cover is as important to the material well being of the community as is a church creed to the spiritual well being of a people and that too much emphasis cannot be laid on the necessity of agricultural development.

He added that his chief endeavor for many years past has been to convince the people of the North that their most valuable asset was their soil and satisfactory results are now being attained in farm development and stock raising.

Concluding his remarks Mr. Gemmell said, "If Crow Wing County were only awake to its great possibilities in this direc-



tion it would soon become one of the most prosperous communities in the state."



**J. A. STETSON**

SELLS

**Farm and Mineral Lands****Mortgage Loans**

DEERWOOD

MINNESOTA

**We Make Regular Trips to Barrows on Tuesday, Thursday & Saturday****E. L. GUIN**

Dealer In

**General Merchandise**

CROW WING

MINNESOTA

**THE NORTHWESTERN LUMBER COMPANY**

JOHN C. MICK, Manager

Dealers In

**Lumber, Lath, Shingles and Cement. Builders' Supplies and****Coal**

RIVERTON

MINNESOTA

Our Services are Broad and Comprehensive. ———

**The First State Bank of Barrows****General Banking Business, Loans & Insurance**

We Pay 4 Per Cent Interest on Savings Accounts    Checking Accounts Invited

BARROWS

MINNESOTA

## Agricultural News

### LESS ATTENTION TO MINING AND MORE TO FARMING.

Down in the states of Indiana, Illinois, Iowa, and Nebraska are thousands of anxious people with their heads and hearts turned northward to the great fields of opportunity—the farm lands of Minnesota. The land men are our fishermen—our rich and bountiful lands their bait. Month after month these persistent land men go down into these states and preach to them of the promised lands in the northland. The poor oppressed farmers in those states bow their heads and beckon to the call of Northern Minnesota.

They come and they see. What?

A people devoted to the development of an industry unknown to them, a state legislature passing good road bills for a section of the state where good roads are plenty, but up here in Crow Wing County we are neglected. We send men to the state legislature from Northern Minnesota who forget the farmer when they board the train which takes them to the capitol. They leave the farming industry in the hands of the Southern and Central Minnesota members of the legislature. Our members talk the mining industry and debate the tonnage tax so fervently that their colleagues from Southern and Central Minnesota come to the conclusion that there are as few farmers in Northern Minnesota as there are miners in Southern Minnesota. And—this is where our Northern Minnesota members of the legislature fall down and the newspapers in this section of the state could not employ their efforts in a better way than by informing our men of influence that there are thousands of farmers in Northern Minnesota and that the lands are just as rich and just as bountiful as any in the state.

We in Northern Minnesota neglect the farmer and the farmer like a peevish child neglects himself. We disregard their requests for good roads and they in turn do not feel encouraged and are satisfied to raise just enough to live.

ENCOURAGE THE FARMER—GIVE HIM A CHANCE—GIVE HIM GOOD ROADS—MAKE

IT POSSIBLE FOR HIM TO RAISE AND HAUL HIS PRODUCE TO THE TOWNS IN CROW WING COUNTY.

Where the stumps and neglected lands are today might be fields of hay and clover. It would make our county richer, better, surer. The business of our county would feel securer—the business men would always wear a smile.

Mining makes history for a county—farming assures its future. Mining and railroading is unstable—circumstances and men—not nature rules its destiny. A mine closes down—what is the consequence? Ore shipments are small and as a result railroads reduce their working force.

Farming towns are real towns—they do not spring up in a night and burst while in a bubble. Their progress is slow, sure, reliable. Just a little less attention to mining and a little more to farming would go a long, long way toward working wonders for a county that has thoughtlessly neglected the tiller of the soil.

Gafke reports crop conditions this year very favorable and predicts that Crow Wing County will make a record for farm produce this year. Will have a record breaking crop of hay and clover and things look fine for good potatoe fields. The farmers are raising some fine stock and to find good blooded stock on the farms in Crow Wing county now is not an uncommon thing.

Now is the time to ward off potato diseases and pests. Farmers and others having potatoes should give attention to disease prevention now, before the season is any further advanced. These troubles are much easier controlled before they gain headway.

The most common potato disease is that called "blight." It is a fungus disease that enters the plant through the leaves in irregular spots, or in rings, one inside another, and often causes the leaves to curl. It spreads, and turns the leaves and stems brown, so that some people mistake it for early ripening. It does not attack the tubers direct, but because of destroying the leaves, the

# BRAINERD CREAMERY COMPANY

915 LAUREL STREET

We Manufacture Crown Brand  
ICE CREAM and BUTTER

BRAINERD

MINNESOTA

## DEFEAT

BY JESSIE L. BRONSON

Up against it? Good! Best thing that ever happened to you.

When Fate puts the thumb-screws on a man the world gets the truth that is in him.

Most men are living a lie. They pass for worms of the dust, when they are gods.

Godhead is talent in every man. It is latent in you.

Many men live only in the surface layers of their being. Get inside, man, get inside.

It requires the dynamite of misfortune to open up the best mines. Get down to business now and dig up some of your gold.

You never know your strength until you have

a knock-down blow.

Disgrace lies not in being down, but in staying down. Show your rebound.

Fate is a bully and a coward. Slink and he will down you. Look him square in the face and the game is yours.

Failed, have you? Well, thank the Lord for it. He has something better waiting when the scales have fallen from your eyes.

A door of opportunity shut in your face means a better one opened beside you. Look for it.

*Failure is the key to success. Get busy and turn the lock.—Nautilus.*

## The Columbia Theater

Home of the Best

Moving Pictures and Music

Sixth and Laurel Streets

BRAINERD

MINNESOTA



tubers are not allowed to grow. This makes the yield low, sometimes as much as 50 per cent. The tubers make their greatest growth toward the last of the season, and when blight destroys the leaves it causes small potatoes, and this greatly reduces the value of the crop.

It is not always possible to prevent this disease, but it can be held in check by proper spraying. Bordeaux mixture is used for this purpose, a mixture made of blue vitriol, lime and water. Directions for mixing are as follows;

Dissolve 4 lbs. of blue vitriol in 25 gallons of water, by placing in a sack suspended near the top of the water. (Note—this is important as it will dissolve much better at the top than at the bottom). Let it soak over night. In the morning dissolve four pounds of quicklime, powered, in 25 gallons of water. Then pour the two solutions together into a 50 gallon tank or barrel, so that the two mix as they are poured. This, also, is important, as a chemical action takes place that forms the substance which kills the disease, and it will not occur so thoroughly if the two solutions are dumped together. Stir the solution vigorously, keep it agitated as it is used. It must be applied at once, as it deteriorates if it stands. Use wood or earthenware vessels, because the solution will attack tin, zinc, iron, or other metals.

It is best to test the solution before using. Immerse a knife-blade in the solution for two or three minutes—if it becomes coppery, add more lime, but if it remains shiney, the solution is alright.

Spraying should begin when the plants are six to ten inches high, and repeated every ten days four or five times. If potato bugs appear, paris green can be added to the Bordeaux mix

ture, and sprayed with it. Extension bulletin No. 35 of the Agricultural college (address University farm, St. Paul), or ask the county agent for one) tells all about this and other potato diseases. Bulletins are free. Use them.

Bordeaux mixture can be used on other ornamental shrubs. If you find traces of worms or caterpillars that devour leaves, add paris green, or spray it alone. But whenever you spray, do it thoroughly, covering all surfaces of all leaves.

Haying usually begins soon after the Fourth. Bear these points in mind.

Cut clover when it has no dew on it.

Put clover hay in cocks before it gets dry. This will preserve the leaves, and they are the most valuable part. Clover should be cured in the shade, and so it should be left in the cock two or three days.

Don't cut too much in one day. Cut half a day—rake the other half.

In an emergency of wet weather, clover can be put in the silo when wet. It makes excellent ensilage.

Don't sell hay—feed it. Remember that your income next winter will depend on the quality of the hay you make this summer.

Clover should be cut when the first blossoms begin to turn brown. If cut later, it will be tougher and less digestible for the cows.

Get extension Bulletin No. 47, University Farm, St. Paul. It gives more about clover hay. Read it.

Call on your county agent for aid and advise. He is ready and willing to give a demonstration or make a visit any time it can be arranged. He is the farmer's hired man.—K. D. Van Wagenen, County Agricultural Agent, St. Louis County.

## Security National Loan Co.

Authorized Capital \$100,000

WM. N. DURRIN, Pres.

Counsel } W. V. KANE  
          } GEO. H. GARDNER

R. R. LIVINGSTON, Sec. &amp; Treas.

**Main Office at International Falls, Minn.****Place Your Time Deposits and Receive 5 Per Cent**

BRAINERD

MINNESOTA

Office Tel. 595  
Res. Tel. 149Office Hours  
2 to 4—7 to 8**DRS. SYKORA & NELSON**  
PHYSICIANS and SURGEONSOffices in the  
Columbia Theater Building  
6th and Laurel Sts.

BRAINERD

MINN.

Office Tel. 414

Res. Tel. 539L

**E. F. JAMISON M. D.**PHYSICIAN and SURGEON  
Ransford Block

BRAINERD

MINN.

I Write all Kinds of Insurance

**BENJ. MARCUS**

ATTORNEY AT LAW

Columbia Theater Building  
6th and Laurel Sts,  
Tel. 613

BRAINERD

MINN.

**F. H. GRANT**THE NEWS MAN  
613 Laurel Street  
BRAINERD, MINN.

Will Take Your Subscription For The

**Crow Wing County Digest**

JOHN W. ERICKSON, Pres.

A. W. NELSON, Treas.

F. L. KINNEY, Manager

## Bay Lake Fruit Growers' Association

**Growers and Shippers of All Kinds of Fruits and Vegetables**

Flour, Feed and Cereals. Our Prices are Always Right. Phone 94

Deerwood

Minnesota

We Have Satisfied People For Over Sixteen Years

# A. M. OPSAHL

The Photographer

Maker of Only High Grade Photographs

OUR Studio is the Best Equipped,  
Facilities the Finest and  
Workmanship the Best to be had

## A. M. OPSAHL

Seventh Street South

Brainerd

Minnesota

American Plan

Rates \$2.00 and \$2.25

Public Bath on Every

Floor. Bath Free

# Iron Exchange HOTEL

J. H. DAVISON, Prop.

Remodeled and Renovated

Brainerd

Minnesota